

Available Marks	Total Marks Gained
100	



CANDIDATE NUMBER

New Zealand Music Examinations Board

THEORY - THIRD GRADE

Time: 9.30am- 11.30am

Saturday 28th October 2006

Time Allowed: 2 Hours

Write your examination number in the box labeled 'Candidate Number'

Question 1	TIME and RHYTHM	Total Marks 14
-------------------	------------------------	-----------------------

A		6
----------	--	----------

Add a rest or rests at each of the places marked * to make the bars complete



B		8
----------	--	----------

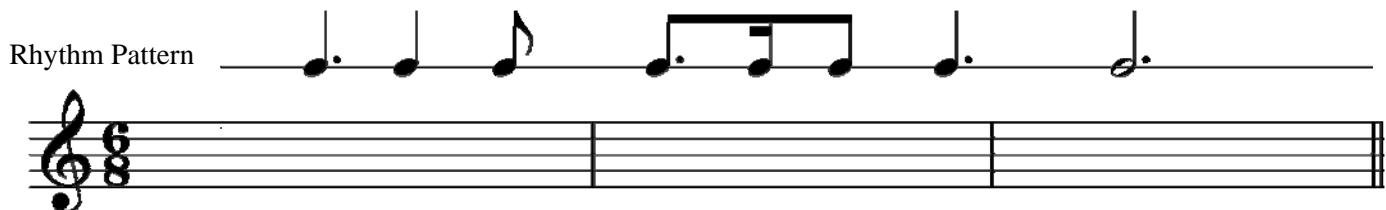
Add a time signature to each of these one-bar rhythms



Question 2	KEYS and SCALES	Total Marks 14
-------------------	------------------------	-----------------------

A		5
----------	--	----------

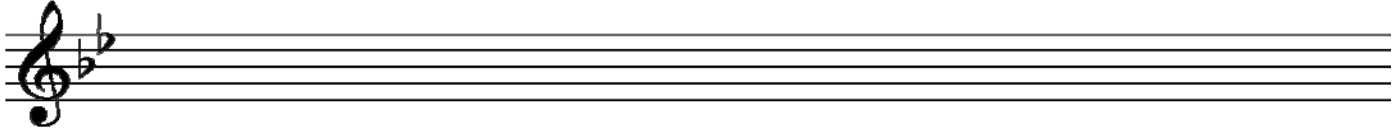
Write the scale of C harmonic minor using the given rhythm, ascending.
Do not use a key signature, but add any necessary sharp or flat signs



Question 2**KEYS and SCALES contd.****B****5**

Write the Minor scale with the given key signature.

- Use minims
- Write two octaves
- Mark each semitone with a slur
- Complete the scale with a double barline

**C****4**

For each of the following, name the two keys that have the given Key Signature.



Keys: 1 _____
2 _____

Keys: 1 _____
2 _____

Question 3**INTERVALS****Total Marks 10****A****5**

Underneath each of these intervals below write its full name - (e.g. Major 6th)
The key is named. In each case the lower note is the key note.

F Major

E Major

D Minor

G Minor

C Minor



Interval: _____

B**5**

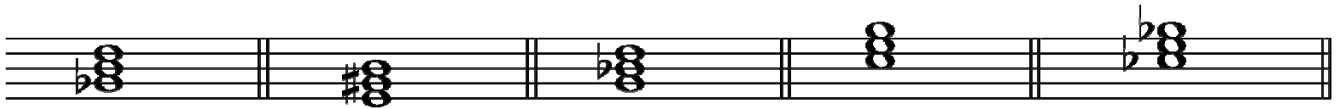
Write these intervals above the given tonic notes

Perfect 4thMinor 3rdMajor 7thMinor 6thPerfect 5th

A

10

Add the correct clef and key signature to each of these tonic triads.



B flat Major

E Major

G Minor

E Minor

E Flat Major

B

10

Write these cadences with key signatures. Use minims.



C Minor
Plagal Cadence
Four part vocal style

D Major
Perfect Cadence
Pianoforte style

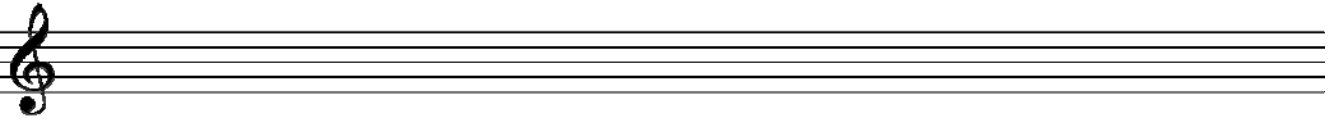
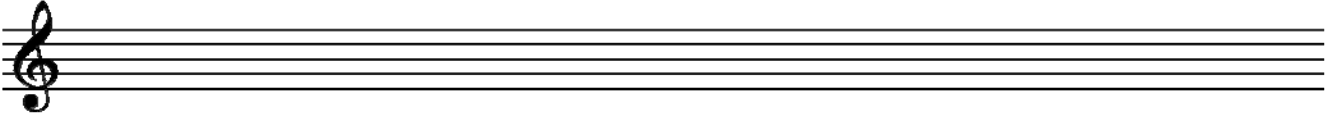
EITHER

12

Write a suitable rhythmic pattern to the following couplet

- Write the words clearly under the notes.
- Use hyphens for words with more than one syllable.

*The sun shines brightly on the waves
What fun! - it's summer holidays*

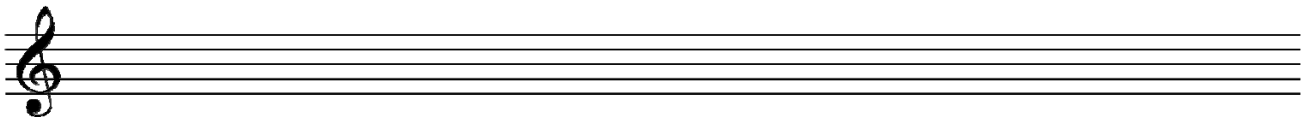


OR

12

Write a melody in E flat Major using the following rhythm.

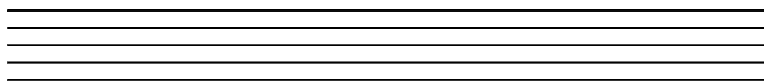
- Mark the phrasing.



A

2

Using an appropriate clef, write the range of the tenor voice in normal choral writing



B

4


Give the English meaning of these terms and signs

- i. Agitato _____
- ii. Attacca _____
- iii. Con Brio _____
- iv. Dolce _____

C

4

Explain these signs

- i. M. D. _____
- ii. Opus _____
- iii. 8va _____
- iv.  _____

D

6

Study the melody below, then answer the questions.

- i. Name the form of the melody _____

1	
---	--
- ii. Mark the sections of the form with the letters - A B ABA OR ABACA

3	
---	--
- iii. Describe the time signature as either simple or compound, duple, triple or quadruple _____

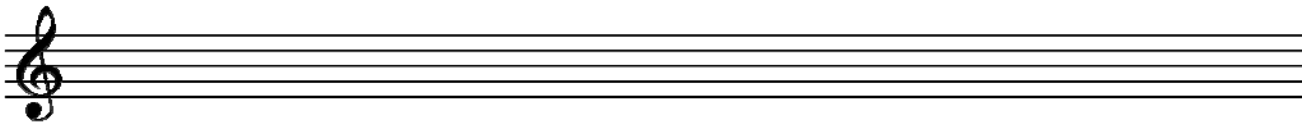
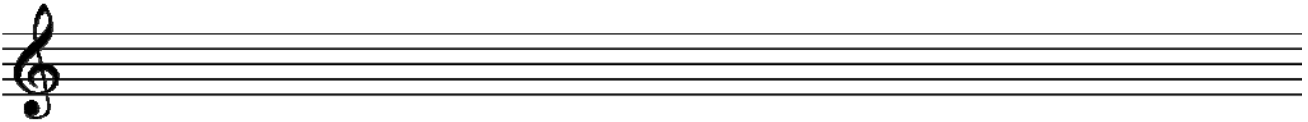
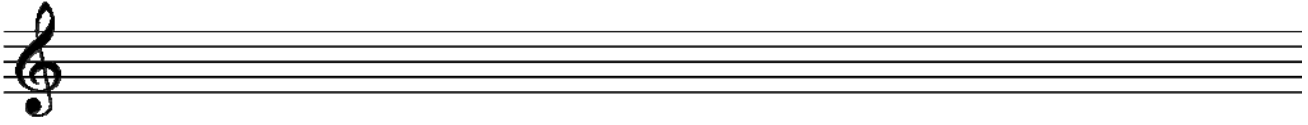
2	
---	--

A

8

Write the melody of “Now is the Hour”

- Do not write the words
- Include the phrasing



B

6

Transpose this melody down into the key of G Minor.

- Write the new key signature.

