

| Available Marks | Total Marks Gained |
|-----------------|--------------------|
| 100 | |



| CANDIDATE NUMBER |
|------------------|
| |

New Zealand Music Examinations Board

THEORY - FOURTH GRADE

Time: 9.30am- 12.30am

Saturday 28th October 2006

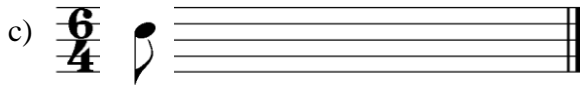
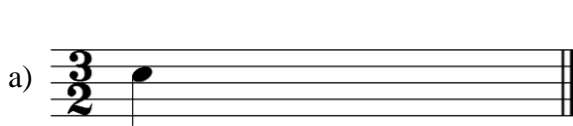
Time Allowed: 3 Hours

Write your examination number in the box labeled 'Candidate Number'

| Question 1 | TIME and RHYTHM | Total Marks 14 |
|------------|-----------------|----------------|
|------------|-----------------|----------------|

| | | |
|----------|--|---|
| A | | 6 |
|----------|--|---|

Complete the following bars with rests in the proper order.



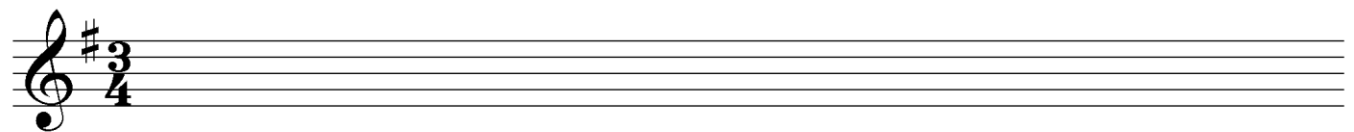
| | | |
|----------|--|---|
| B | | 4 |
|----------|--|---|

Add barlines to the following rhythm in $\frac{9}{8}$ time.



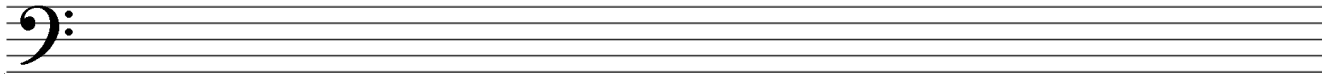
| | | |
|----------|--|---|
| C | | 4 |
|----------|--|---|

Group these notes correctly, adding barlines to make four bars of $\frac{3}{4}$ time.



Question 2**SCALES and MODULATION****Total Marks 11****A** **5**Write the scale of B^b Minor

- Write the Key Signature
- Use Minims
- Write one octave ascending and one octave descending
- Mark each semitone with a slur

**B** **4**

Write the following four Key Signatures, then write the notes as indicated.

A Flat Major
SupertonicG Flat Major
SubmediantB Minor
Leading NoteF# Major
Subdominant**C** **2**

The following melody modulates and ends in a new key. State:

- The name of the new key
- Its relationship to the original tonic key

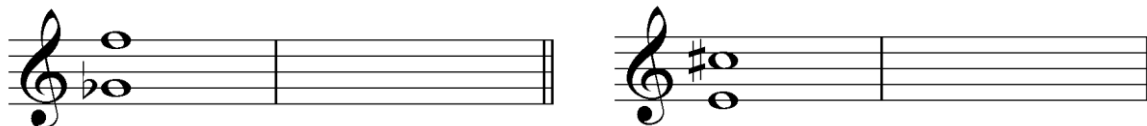


Key of Modulation: _____ Relationship to new key: _____

Question 3**INTERVALS****Total Marks 11****A** **3**Name the following intervals (eg Major 3rd)

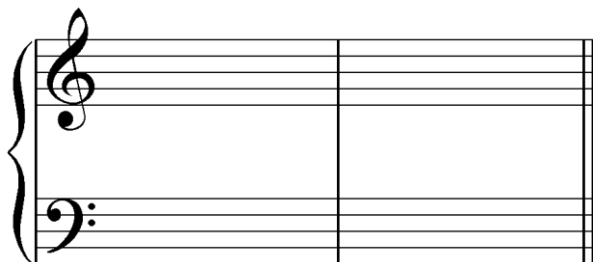
Question 3**INTERVALS contd.****B****4**Major 2ndMinor 6thMajor 6thPerfect 5th**C****4**

Write the inversions of the following two intervals. Name the inversion.

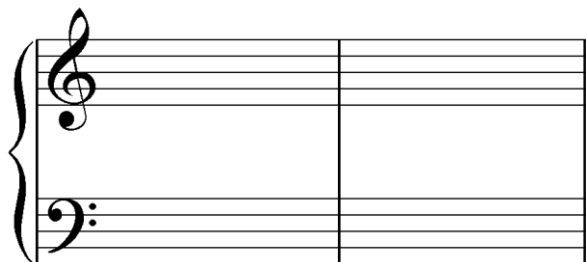
**Question 4****CADENCES and HARMONY****Total Marks 24****A****8**

Write the following Cadences

- Use the correct Key Signatures
- Use Minims



Plagal
D Minor
Four Part Vocal Style

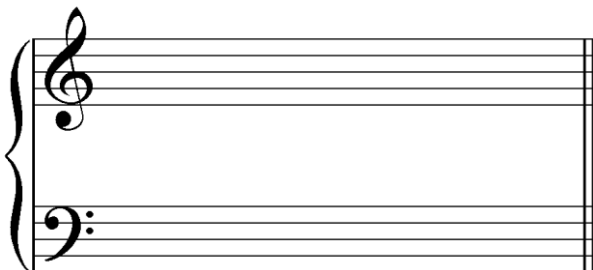


Interrupted
E Major
Pianoforte Style

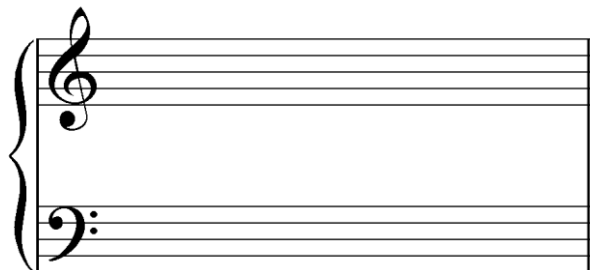
B**8**

Write the following chords in four-part vocal style

- Use Key Signatures



G Minor
Chord V
First Inversion



D Major
Chord II
Root Position

Question 4**CADENCES and HARMONY contd.****C****8**

Complete the following in four parts - S A T B - ending with the cadences named

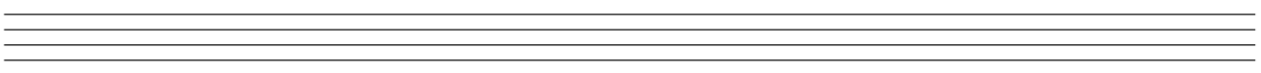
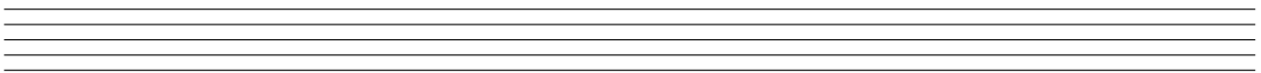
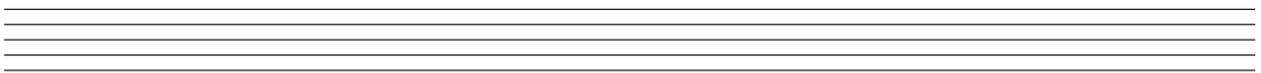
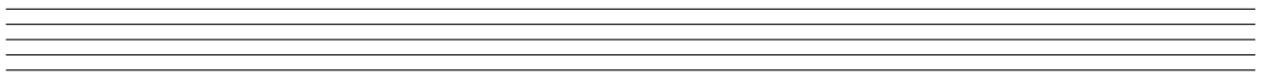
Perfect Cadence

Plagal Cadence

Question 5**MEMORY and TRANSPOSITION****Total Marks 15****A****8**

Write 'God Defend New Zealand'

- Do not write the words
- Use phrasing



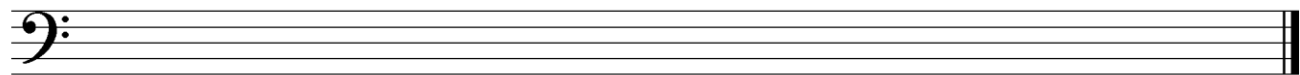
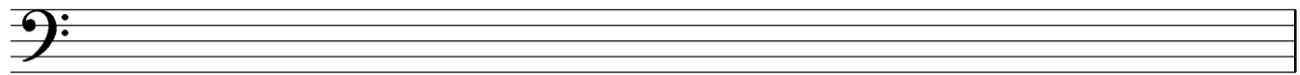
Question 5

MEMORY and TRANSPOSITION contd.

B

7

Transpose the following melody down into the key of E^b Major



Question 6

COMPOSITION

Total Marks 10

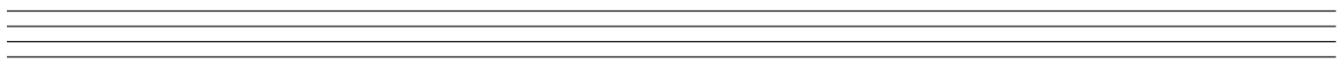
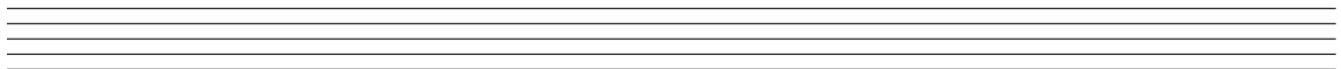
EITHER

10

Write a melody in E^b Major to the following couplet.

- Write the words clearly under the notes
- Use hyphens for words of more than one syllable
- Use separate stems for separate syllables
- Use phrase marks

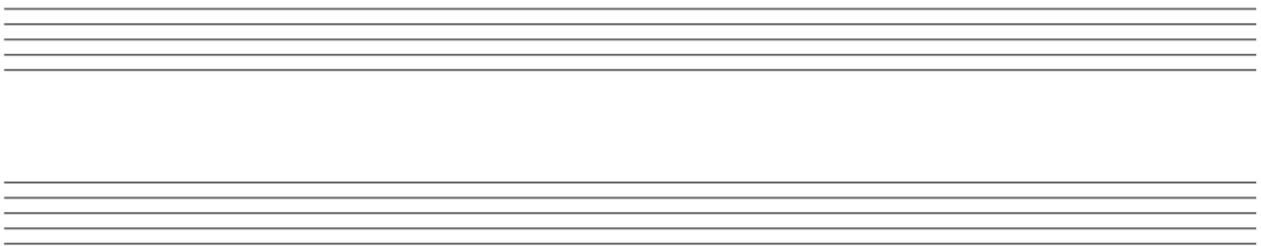
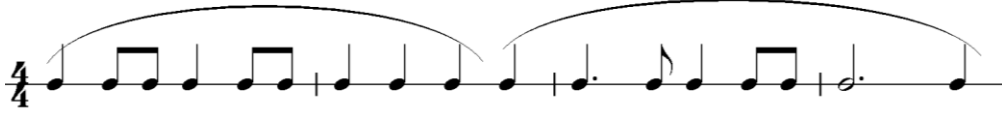
*Above me in a kowhai tree
A tui sings a melody*



Question 6**COMPOSITION contd.****OR****10**

Write a melody in G Minor to the following rhythm

- Add phrase marks
- Use a word at the beginning to indicate that it must be played quickly.

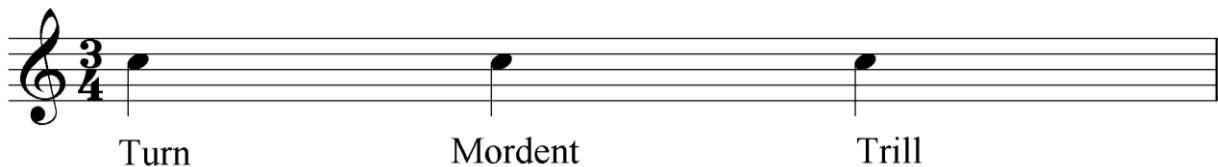
**Question 7****TERMINOLOGY****Total Marks 15****A****5**

Give the meaning of each of these terms

- Tenuto* _____
- Dolente* _____
- L'istesso tempo* _____
- Agitato* _____
- Perdendosi* _____

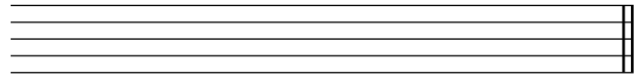
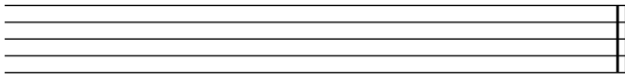
B**3**

Write the following signs, as indicated, over the given notes



Question 7**TERMINOLOGY contd.****C****2**

Write the open string tunings of each of these stringed instruments - using the appropriate clefs

**D****3**

Describe the form, time and character of the Sarabande.

E**2**

Briefly define 'Counterpoint'
