

Available Marks	Total Marks Gained
100	



CANDIDATE NUMBER

New Zealand Music Examinations Board

THEORY - FIFTH GRADE

Time: 9.30am- 12.30am

Saturday 28th October 2006

Time Allowed: 3 Hours

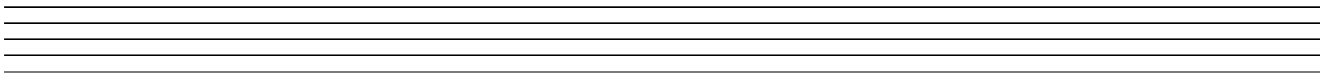
Write your examination number in the box labeled 'Candidate Number'

Question 1	SCALES	Total Marks 12	
-------------------	---------------	-----------------------	--

A		6	
----------	--	----------	--

Write a bass clef then write the melodic minor scale which has E^b as its subdominant.

- Use accidentals - NOT the Key Signature
- Use minims
- Write one octave ascending and one octave descending



B		6	
----------	--	----------	--

Write a treble clef and Key Signature of six sharps

- Write the major scale with this Key Signature
- One octave descending
- Use semibreves
- Mark each semitone with a slur



Question 2	INTERVALS	Total Marks 11	
-------------------	------------------	-----------------------	--

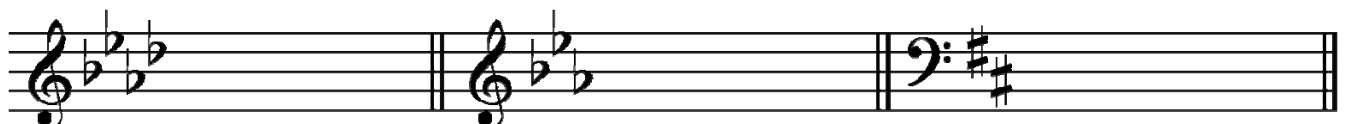
A		3	
----------	--	----------	--

Name the following intervals by number and quality



B		3	
----------	--	----------	--

Now invert the above intervals and name them



Question 2**INTERVALS contd.****C****5**

Write these intervals above or below the given notes as indicated.

Augmented 4th
AboveDiminished 7th
AbovePerfect 4th
BelowMinor 6th
BelowMajor 7th
Above**Question 3****MODULATION****Total Marks 4****A****2**

Each of these melodies modulates and ends in the new key. For each melody, name the new key and state its relationship to the original tonic key.



New Key: _____ Relationship to tonic: _____

B**2**

New Key: _____ Relationship to tonic: _____

A

16

Harmonize the following melody in four vocal parts.

B

16

Cadences

Harmonize the melody under the brackets in four-part vocal style. Show one example of each of the four main cadences.

A**6****Air and Variation Form**

- i. What is an Air? _____

- ii. List 4 ways in which an Air may be varied in Air and Variation form.
- a) _____
- b) _____
- c) _____
- d) _____
- iii. What is the usual form of the Air in Air and Variation Form? _____

B**7**

- i. You would hear recitative if you attended a performance of an Oratorio. At what other kind of performance would you hear recitative? _____
- ii. What is the function of 'recitative'? _____

- iii. What is 'recitative secco'? (*Explain the Term*) _____

- iv. Give an example of 'recitative secco'. Name the Work and the Composer. _____

A

14

i. List the four main orchestral woodwind instruments in a Symphony Orchestra

- a) _____
 b) _____
 c) _____
 d) _____

ii. Which woodwind instruments have

a double reed _____

a single reed _____

no reed _____

iii. What is meant by a transposing instrument? _____

iv. Which of the four main orchestral woodwind instruments is a transposing instrument? _____

v. Write the range of each of the following instruments:

Flute

Clarinet

EITHER

14

Write a melody in A Major to this four lined verse.

- Write the words clearly under the notes
- Hyphenate the syllables
- Phrase marks are to be used
- Modulation is optional

*Winter willow is ruddy red,
Pollarded in the withy-bed
Summer willow is green and grey
Bending white on a windy day*
(P Tennant)

Four sets of empty musical staves for writing the melody.

OR

14

Continue the given opening to create a balanced eight-bar melody

- Add phrasing

Three sets of empty musical staves for continuing the melody.