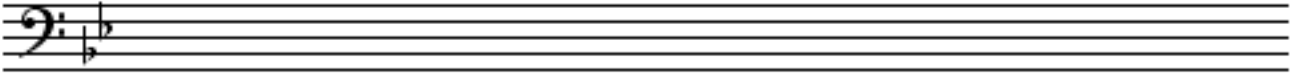


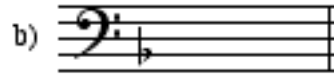
Question 2**KEYS and SCALES contd.****B****5**

Write the harmonic minor scale with the given key signature.

- Use minims.
- Write one octave ascending and one octave descending.
- Mark each semitone with a slur.
- Complete the scale with a double barline.

**C****4**

For each of the following, name the two keys that have the given Key Signature.



Keys: 1 _____

Keys: 1 _____

2 _____

2 _____

Question 3**INTERVALS****Total Marks****10****A****5**

Underneath each of these intervals below write its full name - (e.g. Major 6th)
The key is named. In each case the lower note is the key note.

E flat major

A minor

A flat major

G minor

C minor



Interval: _____

B**5**

Write these intervals above the given tonic notes.



Minor 6th

Major 3rd

Major 7th

Perfect 4th

Major 2nd

A

10

Add the correct clef and key signature to each of these tonic triads.

B flat major G minor C minor E flat major D minor

B

10

Write these cadences with key signatures.

- Use minims

C minor
Perfect Cadence
Four-part Vocal Style

E Major
Plagal Cadence
Pianoforte Style



12

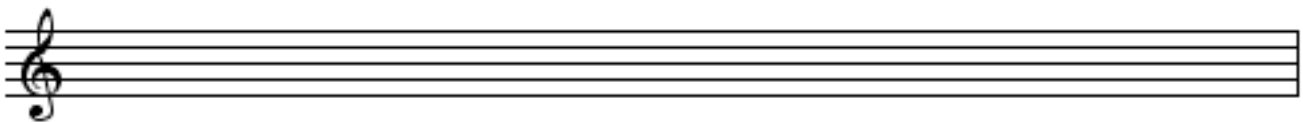
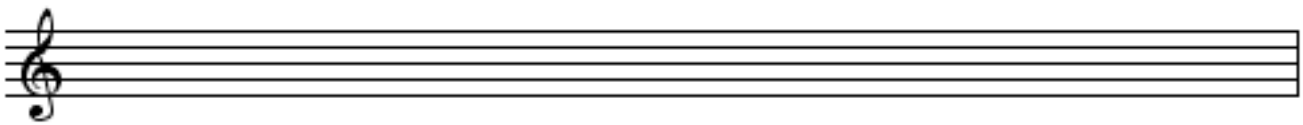
EITHER

Write a suitable rhythmic pattern to the following couplet

- Write the words clearly under the notes.
- Use hyphens for words with more than one syllable.

The Tui is a mimic - perching high up in the tree

I wonder if I sneeze aloud - he'll try to copy me!

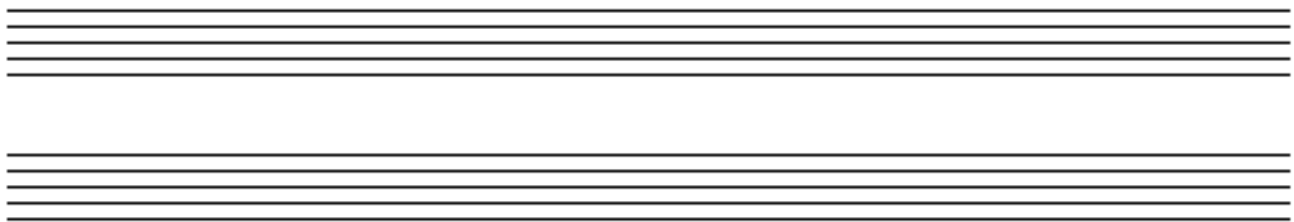


12

OR

Write a melody in D Major using the following rhythm.

- Mark the phrasing.
- Write the Key Signature.



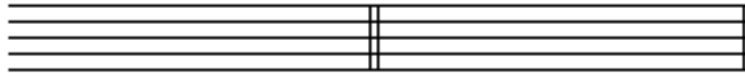
A

2

Using an appropriate clef, write the range of each of the following voices in normal choral writing.

Tenor voice

Soprano voice



B

5



Give the English meanings to these terms.

- i una corda _____
- ii morendo _____
- iii largamente _____
- iv leggiero _____
- v ben marcato _____

C

4

Explain these signs

- i Opus _____
- ii  _____
- iii *8va bassa* _____
- iv *mm*  = 132 _____

D

Study the melody below, then answer the questions.



Name the form of the melody _____ 1

Mark the sections of the form with the letters - AB; ABA; or ABACA _____ 3

Describe the time signature as simple or compound _____ 2

duple, triple or quadruple _____

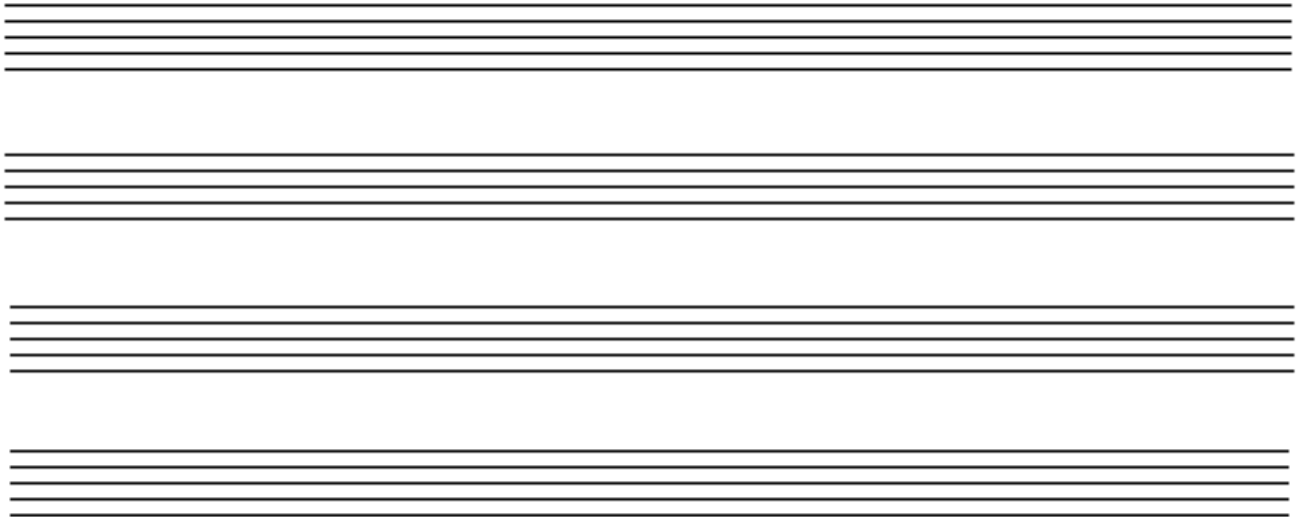


A

8

Write the melody of “Now is the Hour.”

- Do not write the words
- Include the phrasing



B

6

Transpose this melody up into the key of G minor.

- Write the new key signature.

