



Available Marks	Total Marks Gained
100	

ENTRANT NAME

NEW ZEALAND MUSIC EXAMINATIONS BOARD

THEORY - FOURTH GRADE

Time: 9.30 am - 12.30 pm

Time Allowed: 3 Hours

Saturday, 1st November, 2008

Write your name in the box labelled 'Entrant Name'

Question 1	TIME and RHYTHM	Total Marks	14
------------	-----------------	-------------	----

A		6	
----------	--	----------	--

Complete the following bars with rests in the proper order.

a)

b)

c)

B		4	
----------	--	----------	--

Add barlines to the following rhythm in $\frac{12}{8}$ time.

C		4	
----------	--	----------	--

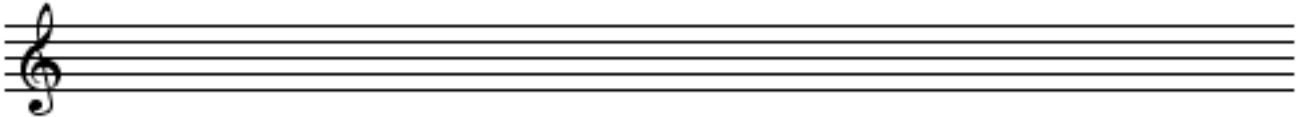
Group these notes correctly, adding barlines to make four bars of $\frac{6}{8}$ time.

A

5

Write the scale of F# harmonic minor

- Use accidentals - not the key signature.
- Use crotchets.
- Write one octave descending.
- Mark each tone with a slur.
- Complete the scale with a double barline.



B

4

Write the following four Key Signatures, then write the notes as indicated.

- Use minims.



B flat minor
Mediant

B Major
Dominant

D flat Major
Submediant

F Minor
Leading note

C

2

The following melody modulates and ends in a new key. State:

- The name of the new key.
- Its relationship to the original tonic key.

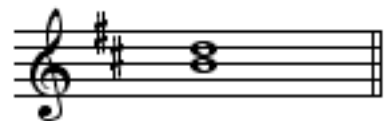
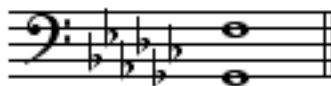


Key of Modulation: _____ Relationship to original tonic key: _____

A

3

Name the following intervals by number and quality.



Question 3**INTERVALS contd.****B****4**

Write these intervals above the given tonic notes.

Minor 6th Minor 3rd Major 6th Perfect 4th

C**4**

Write the inversions of the following two intervals. Name the inversions.

Question 4**CADENCES and HARMONY****Total Marks****24****A****8**

Write the following cadences

- Use the correct Key Signatures
- Use Minims

Imperfect
C Sharp Minor
Pianoforte Style

Interrupted
A flat Major
Four-part Vocal Style

B**8**

Write the following chords in four-part vocal style

- Use Key Signatures
- Use Semibreves

C Minor
Chord VI
First Inversion

E flat Major
Chord IV
Root position



Question 4**CADENCES & HARMONY contd.****C****8**

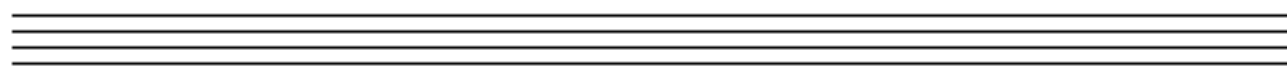
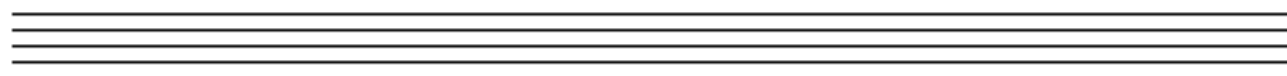
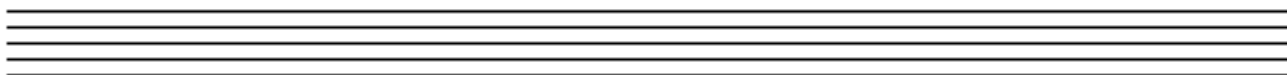
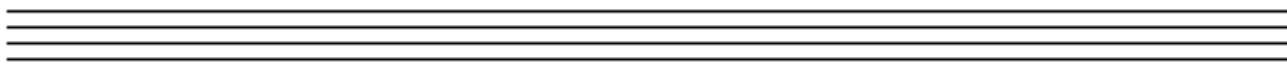
Complete the following in four-part Vocal-style.

- Use Root position and first inversion chords.

Question 5**MEMORY & TRANSPOSITION****Total Marks****15****A****8**

Write “God Defend New Zealand”

- Do not write the words
- Use phrasing
- Use the treble clef



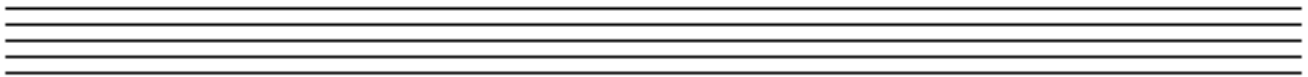
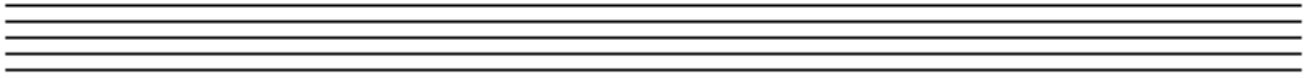
Question 5

MEMORY & TRANSPOSITION contd.

B

7

Transpose the following melody down into C Minor



Question 6

COMPOSITION

Total Marks

8

EITHER

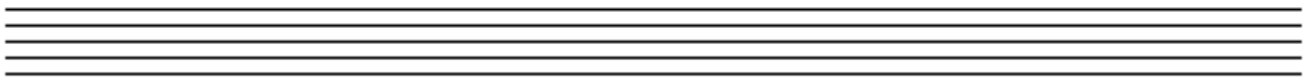
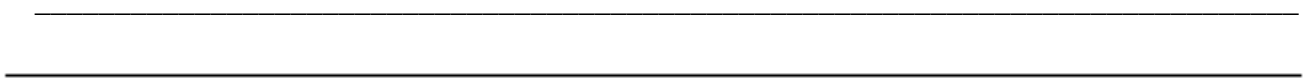
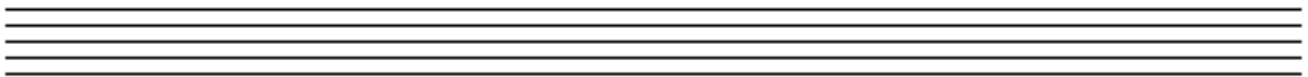
8

Write a melody in D major to the following couplet.

- Write the words clearly under the notes
- Use hyphens for words of more than one syllable
- Use separate stems for separate syllables
- Use phrase marks.

**When through the torn sail - the wind tempest streaming,
When o'er the dark wave the red lightning gleaming.**

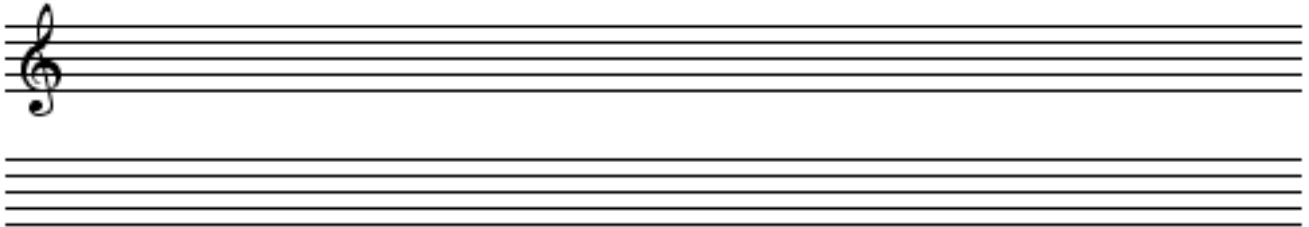
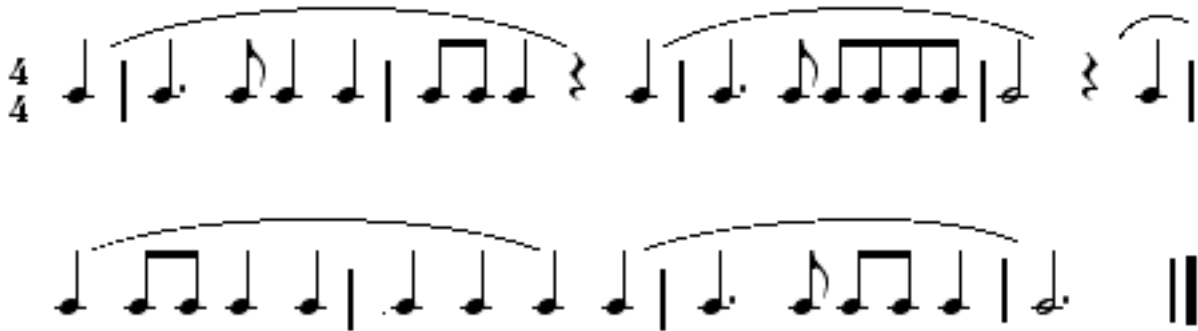
Herber



Question 6**COMPOSITION contd.****OR****8**

Write a melody in B flat Major to the following rhythm.

- Add phrase marks
- Use a word at the beginning to indicate that it must be played at a moderate speed.

**Question 7****TERMINOLOGY****Total Marks****17****A****5**

Give the meaning of each of these terms

- non troppo _____
- tempo commodo _____
- smorzando _____
- cantando _____
- piacevole _____

B**3**

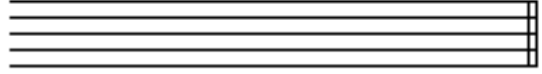
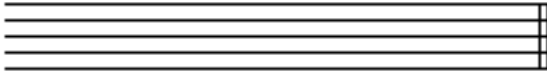
Write the following signs, as indicated, over the given notes



C

2

Write the open string tunings of each of these stringed instruments - using the appropriate clefs.



Cello

Viola

D

5

Question (a) Name the four standard dances of the Baroque Keyboard Suite.

Answer _____

b) Briefly describe the form, time and character of the Gavotte.

Answer _____

E

2

Briefly define the term "Syncopation"
