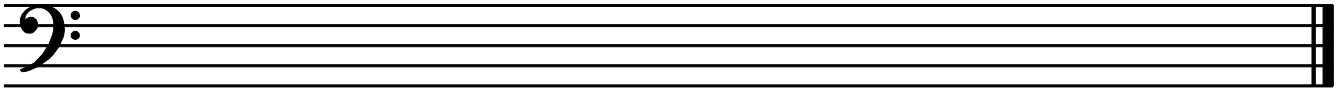


Question 2**SCALES and MODULATION****Total Marks 10****A****4**

Write the scale of C sharp harmonic minor

- Use accidentals-not the key signature
- Use Minims
- Write one octave ascending and one octave descending
- Mark each tone with a slur

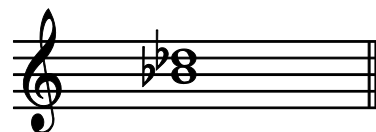
**B****4**

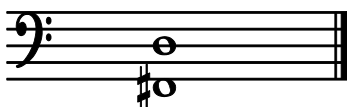
Write the following four Key Signatures, then write quaver notes as indicated.

G flat major
SubdominantF minor
SubmediantB flat minor
Leading noteF sharp Major
Supertonic**C****2**

The following melody modulates and ends in a new key. State:

- The name of the new key
- The relationship of the new key to the original tonic key

Key of
Modulation: _____Relationship to original
tonic key: _____**Question 3****INTERVALS****Total Marks 11****A****3**Name the following intervals (eg Major 3rd) written above the tonic notes



Question 3**INTERVALS contd.****B****4**

Write these intervals as harmonic intervals above the given tonic notes.

Major 7th Perfect 4th Minor 6th Minor 3rd

C**4**

Write the inversions of the following two intervals as melodic intervals. Name the inversions.

Question 4**CADENCES and HARMONY****Total Marks 24****A****8**

Write the following Cadences

- Use the correct Key Signatures
- Use Minims

Interrupted
F minor
Four Part Vocal Style

Imperfect
E major
Pianoforte Style

B**8**

Write the following chords in four-part vocal style

- Use Key Signatures
- Use Semibreves

A flat major
Chord VI
First Inversion

F sharp minor
Chord V
Root Position

Question 4**CADENCES and HARMONY contd.****C****8**

Complete the following in four parts - S A T B - ending with the Cadences named

Question 5**MEMORY and TRANSPOSITION****Total Marks
15****A****7**

Write 'God Defend New Zealand'

- Do not write the words
- Use phrasing
- Use the treble clef



Question 5**MEMORY and TRANSPOSITION contd.****B****8**

Transpose the following melody up into the key of E flat major.

Allegro

Question 6**COMPOSITION****Total Marks 10****EITHER****10**

Write a melody in B flat Major to the following lines of poetry.

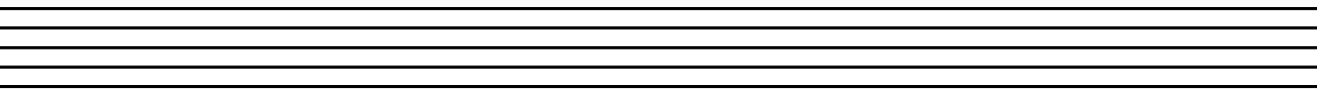
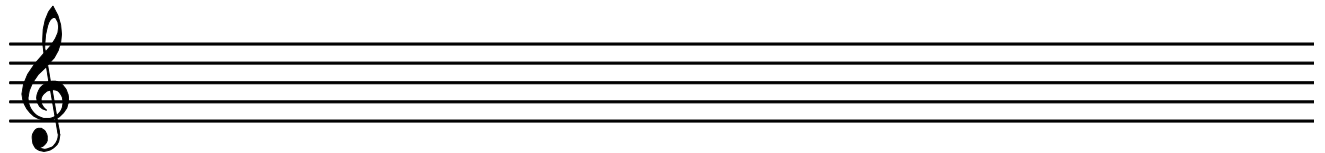
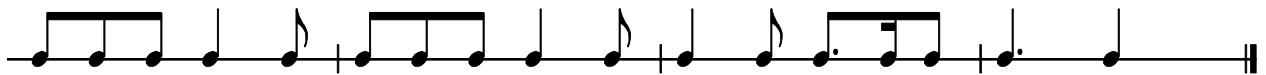
- Write the words clearly under the notes
- Use hyphens for words of more than one syllable
- Use separate stems for separate syllables
- Use phrase marks

*The mountains snow-capped and the blue Tasman Sea
Of all lovely places- the west coast's for me!*

Question 6**COMPOSITION contd****OR****10**

Write a melody in G Minor to the following rhythm

- Add phrase marks
- Use a word at the beginning to indicate that it must be played very quickly.

**Question 7****TERMINOLOGY/Form****Total Marks
16****A****6**

Give the meaning of each of these terms

i *Tempo giusto*

ii *Loco*

iii *Rubato*

iv *Da capo al fine*

v *Perdendosi*

vi *Rinforzando*

B**2**

Write the following signs, as indicated, over the given notes

A – Appoggiatura

B – Turn

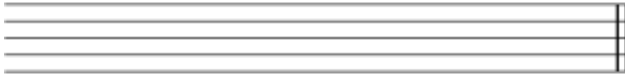


A
Appoggiatura

B
Turn

Question 7**TERMINOLOGY contd.****C****2**

Write the open string tunings of each of these stringed instruments - using the appropriate clefs.



Cello

Violin

D**4**

Briefly describe and compare the two types of Courante

E**2**

Briefly describe the two following terms:

a) Suite _____

b) Syncopation _____
