

Available Marks	Total Marks Gained
100	



Entrant Name

New Zealand Music Examinations Board

THEORY - FOURTH GRADE

Time: 9.30am- 12.30pm

Saturday 30th October 2010

Time Allowed: 3 Hours

Write your name in the box labelled 'Entrant Name'

Question 1	TIME and RHYTHM	Total Marks 15
-------------------	------------------------	-----------------------

A 6

Complete the following bars with rests in the correct order.

a)

b)

c)

B 4

Add barlines to the following rhythm in $\frac{9}{8}$ time.

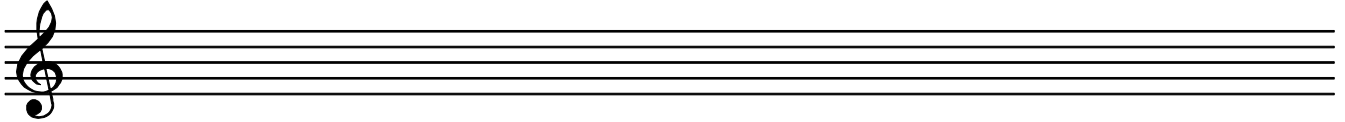
C 5

Group these notes correctly, adding barlines to make four bars of $\frac{6}{4}$ time.

Question 2**SCALES and MODULATION****Total Marks 10****A****4**

Write the scale of F harmonic minor

- Use accidentals-not the key signature
- Use semibreves
- Write one octave descending and one octave ascending
- Mark each semitone with a slur

**B****4**

Write the following four Key Signatures, then write the notes as indicated. Use quavers.

B minor
SupertonicD flat major
SubdominantF sharp minor
Leading noteG flat Major
Submediant**C****2**

The following melody modulates and ends in a new key. State:

- The name of the new key
- The relationship of the new key to the original tonic key

Key of
Modulation: _____Relationship to original
tonic key: _____**Question 3****INTERVALS****Total Marks 11****A****3**Name the following intervals (eg Major 3rd) written above the tonic notes

Question 3**INTERVALS contd.****B****4**

Write these intervals above the given tonic notes.

Major 2nd Minor 3rd Minor 6th Perfect 4th

C**4**

Write the inversions of the following two intervals. Name the inversions.

Question 4**CADENCES and HARMONY****Total Marks 23****A****8**

Write the following Cadences

- Use the correct Key Signatures
- Use Minims

Interrupted
C sharp minor
Four Part Vocal Style

Plagal
C minor
Pianoforte Style

B**6**

Write the following chords in four-part vocal style

- Use Key Signatures
- Use Semibreves

E minor
Chord V
First inversion

B minor
Chord VI
First inversion

Question 4**CADENCES and HARMONY contd.****C****9**

Complete the following in four parts - S A T B - ending each phrase with an appropriate cadence



Interrupted



Perfect

Question 5**MEMORY and TRANSPOSITION****Total Marks 15****A****7**

Write 'God Defend New Zealand'

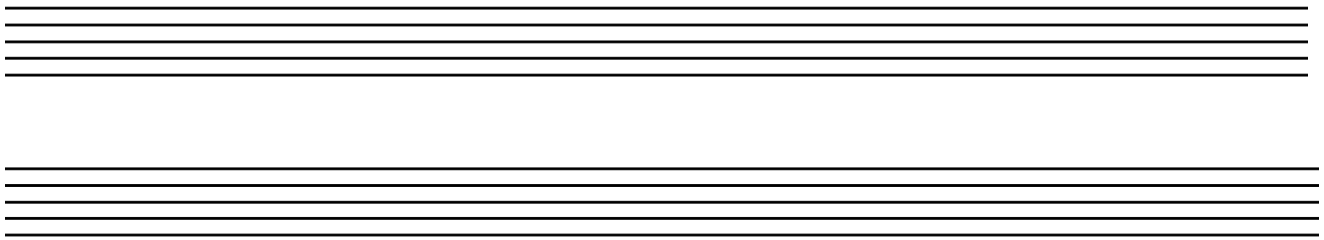
- Do not write the words
- Use phrasing
- Use the treble clef

Question 5**MEMORY and TRANSPOSITION contd.****B****8**

Transpose the following melody up into the key of B flat minor.



A musical score in 4/4 time, B-flat major (two flats). The melody consists of two staves. The first staff begins with a treble clef, a key signature of two flats, and a 4/4 time signature. The melody is written in a single voice with various note values and accidentals. The second staff continues the melody, ending with a double bar line.



Two sets of empty musical staves, each consisting of five lines, provided for the student to transcribe the melody into B-flat minor.

Question 6**COMPOSITION****Total Marks 10****EITHER****10**

Write a melody in B Major to the following couplet.

- Write the words clearly under the notes
- Use hyphens for words of more than one syllable
- Use separate stems for separate syllables
- Use phrase marks

*"There no passing cloud nor vapour
Dims the brightness of the air.*

H. Smart

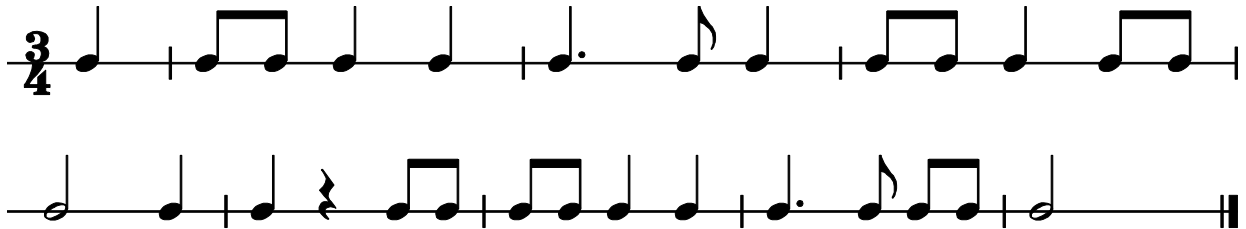


Two sets of empty musical staves, each consisting of five lines, provided for the student to compose a melody in B Major for the given couplet.

Question 6**COMPOSITION contd****OR****10**

Write a melody in E Minor to the following rhythm pattern.

- Add phrase marks
- Use a word at the beginning to indicate that it must be played quickly.



Two sets of empty musical staves for writing the melody.

Question 7**TERMINOLOGY****Total Marks
16****A****5**

Give the meaning of each of these terms

i *L'istesso tempo*

ii *Stringendo*

iii *Pesante*

iv *Cantando*

v *Quasi*

B**3**

Write the following signs, as indicated, over the given notes

A – Lower mordent

B – Trill

C - Appoggiatura



A
Lower mordent

B
Trill

C
Appoggiatura

Question 7**TERMINOLOGY contd.****C****2**

Write the open string tunings of each of these stringed instruments - using the appropriate clefs.



Double Bass



Viola

D**4**

A. Briefly describe the character, time and tempo of the Allemande.

B. Name two dances of the suite which do not usually begin with an anacrusis

1) _____ 2) _____

E**2**

Explain the meaning of the term "Counterpoint".
