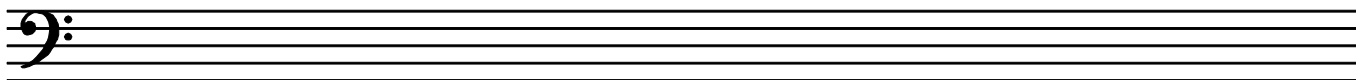




**Question 2****SCALES and MODULATION****Total Marks 10****A****4**

Write the scale of G flat major

- Write the key signature
- Use minims
- Write one octave ascending and one octave descending
- Mark each tone with a slur

**B****4**

Write the following four key signatures, then write the notes as indicated. Use minims.

B major  
MediantC minor  
Leading noteF sharp major  
SubmediantF sharp minor  
Leading note**C****2**

The following melody modulates and ends in a new key. State:

- The name of the new key
- The relationship of the new key to the original tonic key

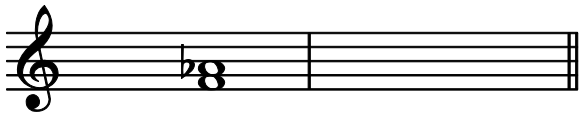
Key of  
Modulation: \_\_\_\_\_Relationship to original  
tonic key: \_\_\_\_\_**Question 3****INTERVALS****Total Marks 11****A****3**Name the following intervals (eg Major 3<sup>rd</sup>) written above the tonic notes

**Question 3****INTERVALS contd.****B****4**

Write these intervals above the given tonic notes.

Augmented 4<sup>th</sup>Major 6<sup>th</sup>Perfect 4<sup>th</sup>Minor 6<sup>th</sup>**C****4**

Write the inversions of the following two intervals. Name the inversions.



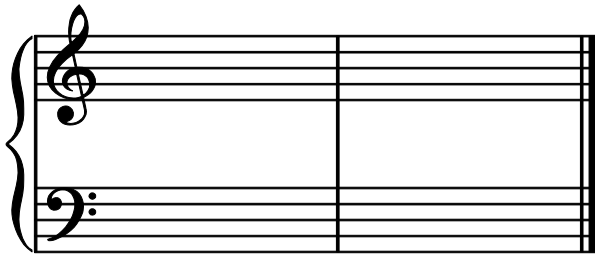
\_\_\_\_\_

\_\_\_\_\_

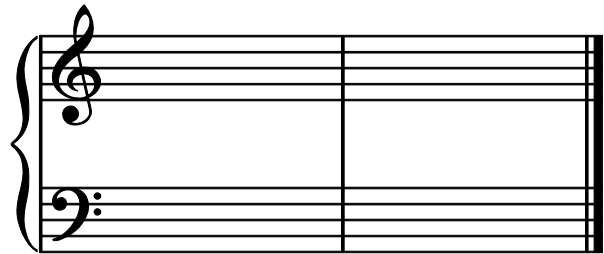
**Question 4****CADENCES and HARMONY****Total Marks 23****A****8**

Write the following Cadences

- Use the correct key signatures
- Use crotchets



Perfect Cadence  
B major  
Pianoforte Style

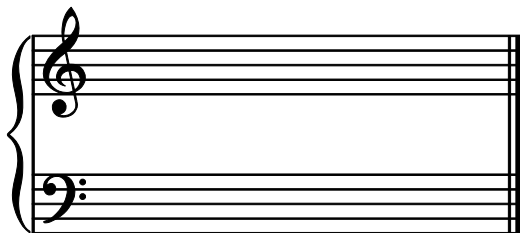


Interrupted Cadence  
C minor  
Four Part Vocal Style

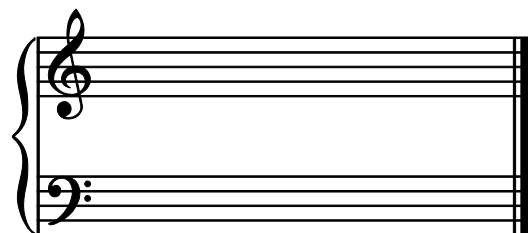
**B****6**

Write the following chords in four-part vocal style

- Use key signatures
- Use Semibreves



B minor  
Chord IV  
First inversion

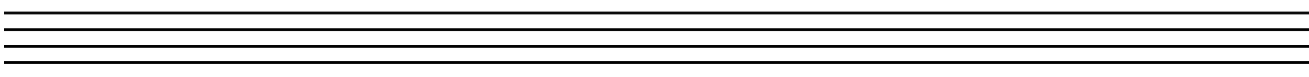
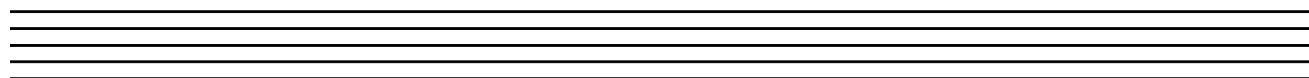
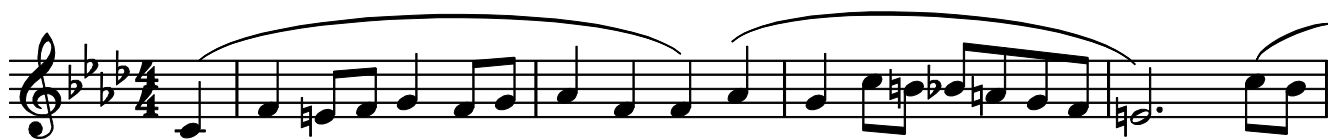


F minor  
Chord VI  
First inversion



**Question 5****MEMORY and TRANSPOSITION contd.****B****8**

Transpose the following melody up into the key of G minor.

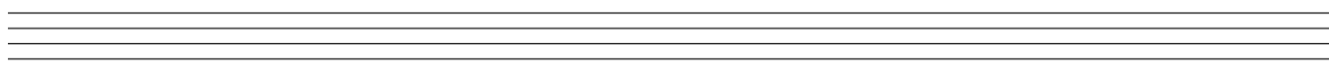
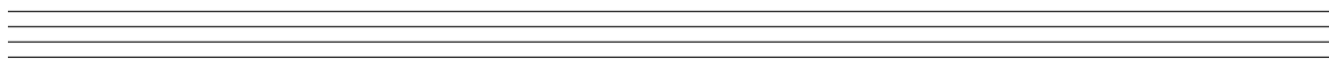
**Question 6****COMPOSITION****Total Marks 10****EITHER****10**

Write a melody in E Major to the following couplet.

- Write the words clearly under the notes
- Use hyphens for words of more than one syllable
- Use separate stems for separate syllables
- Use phrase marks

*"When the world around is smiling  
in this time of wealth and ease"*

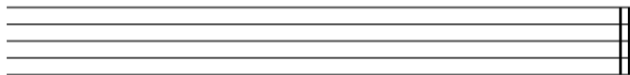
Cummins



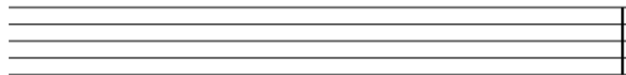


**Question 7****MUSICAL KNOWLEDGE contd.****C****2**

Write the open string tunings of each of these stringed instruments - using the appropriate clefs.



Viola



Double Bass

**D****4**

- A. Arrange the following dances in the order in which they appeared in the Suite. Sarabande; Allemande; Gigue; Courante.

---



---



---

- B. Write a full description of the Sarabande.

---



---



---



---



---



---

**E****2**

Explain the meaning of the term "Counterpoint".

---



---



---



---



---