

Available Marks	Total Marks Gained
100	



Entrant Name

New Zealand Music Examinations Board

THEORY - SECOND GRADE

Time: 9.30am- 11am

Saturday 31st October 2015

Time Allowed: 1 1/2 Hours

Write your name in the box labelled 'Entrant Name'

Question 1	TIME and RHYTHM	Total Marks 20
-------------------	------------------------	-----------------------

A	5
----------	----------

Add a rest or rests at each of the places marked * to make the bars complete

a)

b)	4
-----------	----------

b)

c)	3
-----------	----------

c)

d)

B	4
----------	----------

Add the missing barlines to the following, which starts on the first beat of the bar

C	4
----------	----------

Write a time signature for each of the following:

a)

b)

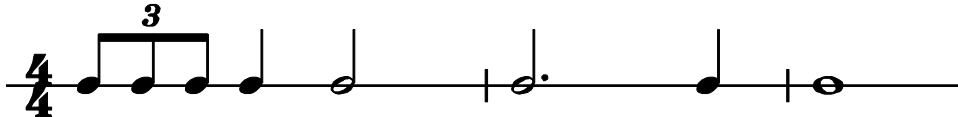
A

5

Write the scale of A major

- Write the scale ascending
- Use the given rhythm pattern
- Write the key signature
- Complete the scale with a double barline

Rhythm Pattern

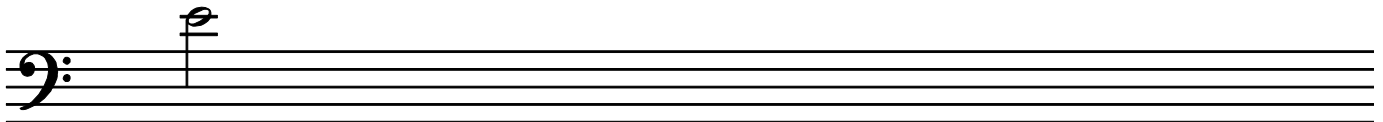


B

5

Write the minor scale that begins on the given note.

- Write the key signature
- Write two octaves descending
- Use minims
- Mark each tone with a slur
- Complete the scale with a double barline

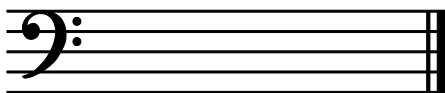


C

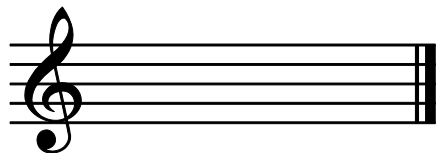
4

For each of the following write

- the key signature
- the tonic triad



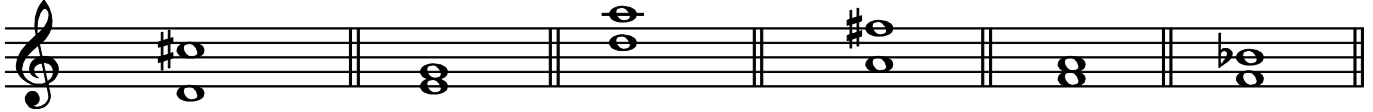
D minor



D Major

Question 3**INTERVALS and TRIADS****Total Marks 18****A****12**

Name each of these intervals by number and quality (eg Major 6th)



Number: _____

Quality: _____

B**6**

Write these intervals above the given notes.



Perfect 8ve

Minor 6th

Major 7th

Major 2nd

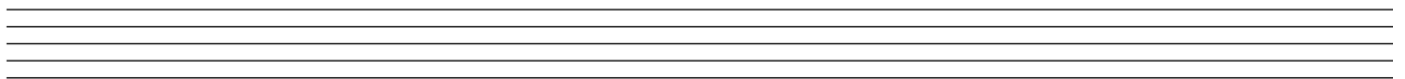
Major 3rd

Perfect 4th

Question 4**MEMORY****Total Marks 12****A****12**

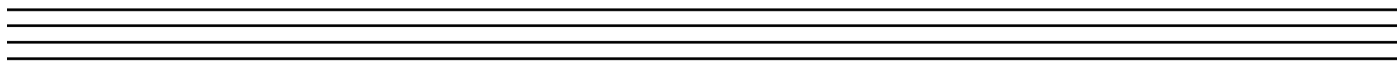
Write the whole melody of 'Pokarekare Ana' from memory

- Do not write the words
- Use the treble clef
- Mark the phrasing



A**10**

Transpose this melody up into the key of D major. Add the new key signature.

**A****8**

Place a barline before each accented syllable or word in the following couplet.

Two little sparrows flew high in the sky,

Searching the trees, for places to nest.

A

10

There are twelve bars in the melody below. Study it carefully then answer the questions that follow.

- 1) Add a word above the first note, to show that the melody is to be played at a moderate speed.
- 2) Add a pause sign above the last note in bar 12.
- 3) Add a word below bar 11 to show that the melody is slowing down.
- 4) Add a sign under bar 5 to show that the notes are getting gradually louder.
- 5) What is the meaning of the dots below the notes in bar 5? _____

- 6) What does the curved line under the first 3 notes mean? _____

- 7) Name the form of the melody _____
- 8) Mark the sections of the melody with the letters A B or A B A

1	
1	
1	
1	
1	
1	
2	
2	

B**8**

Give the English meanings of the following terms:

1) *Da capo al fine* _____

2) *Sostenuto* _____

3) *Molto* _____

4) *Diminuendo* _____

5) *Vivace* _____

6) *Largo* _____

7) *Ritenuato* _____

8) *Mezzo staccato* _____