

| Available Marks | Total Marks Gained |
|-----------------|--------------------|
| 100 | |



| Entrant Name |
|--------------|
| |

New Zealand Music Examinations Board

THEORY - FIRST GRADE

Time: 9.30am- 10.30am

Saturday 6th May 2017

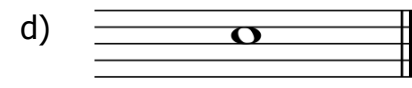
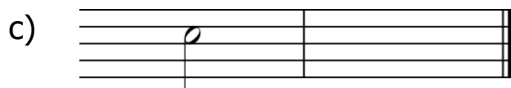
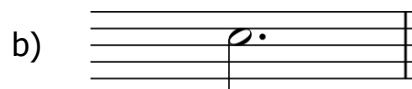
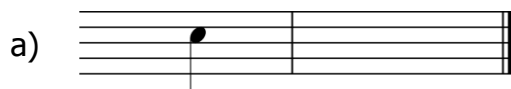
Time Allowed: 1 Hour

Write your name in the box labelled 'Entrant Name'

| Question 1 | TIME and RHYTHM | Total Marks 16 |
|------------|-----------------|----------------|
|------------|-----------------|----------------|

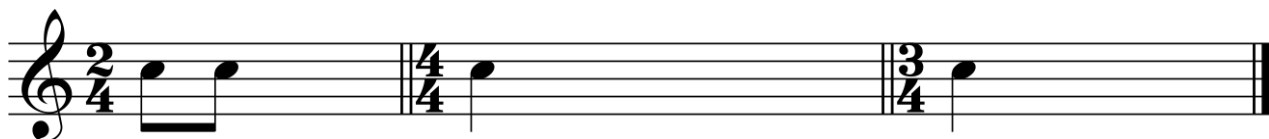
| | | |
|----------|--|----------|
| A | | 6 |
|----------|--|----------|

Under each of the notes write its time name (eg semibreve, minim, crotchet, quaver). Next to each of the notes at a) and c) write a rest that has the same time value.



| | | |
|----------|--|----------|
| B | | 5 |
|----------|--|----------|

Complete the following bars with a rest or rests in the correct order.



| | |
|----------|--|
| 3 | |
|----------|--|

Add one rest at each of the places marked * to make the bars complete.



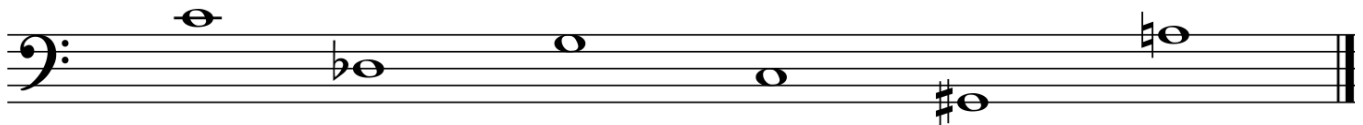
| | | |
|----------|--|----------|
| C | | 2 |
|----------|--|----------|

Add a time signature to the following melody.



Question 2**PITCH****Total Marks 18****A**

Name these notes. Write words for sharp, flat and natural.

6**Example:** F sharp**6****B**

Write the following notes as semibreves.

6

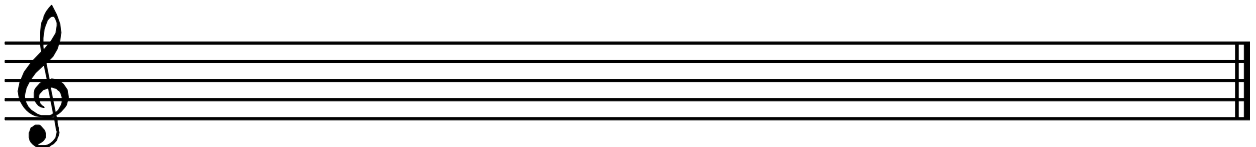
E on a line

C sharp
in a spaceA natural
in a spaceMiddle C
on a lineB flat
on a lineF sharp
on a line**Question 3****KEYS and SCALES****Total Marks 20****A**

Write the scale of G major beginning in a space

5

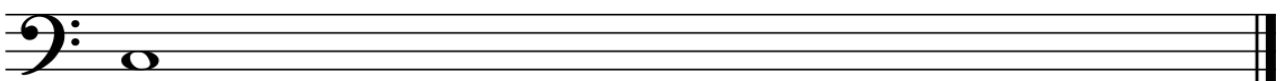
- Write the key signature
- Use minims
- Write one octave descending
- Mark each semitone with a slur
- Draw a circle around the 5th degree of the scale

**B**

Write the major scale that begins on the given note

5

- Use semibreves
- Write one octave ascending
- Mark each tone with a slur
- Draw a circle around the 3rd degree of the scale

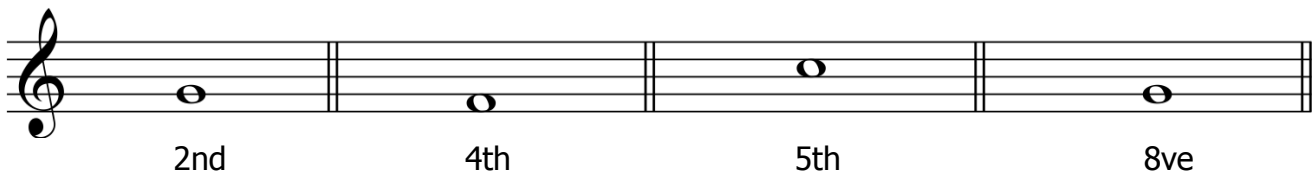


Question 3**KEYS and SCALES contd.****C****10**

Write the scale degree numbers under the notes of this melody (eg 1, 2, 3, 4, etc)

**Question 4****INTERVALS and TRIADS****Total Marks 12****A****4**

Write one note above each of these notes to make the following intervals.

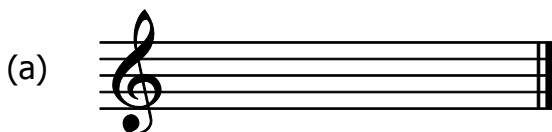
**B****4**

Number the following intervals (eg 2nd)

**C****4**

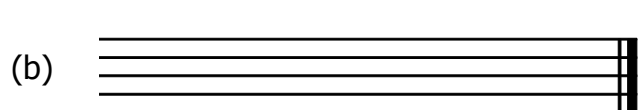
On the staff marked (a)

- Write the key signature of F major
- Write the tonic triad of F major



On the staff marked (b)

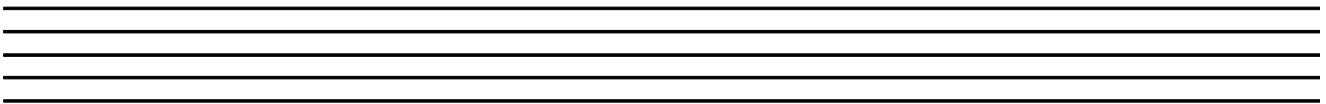
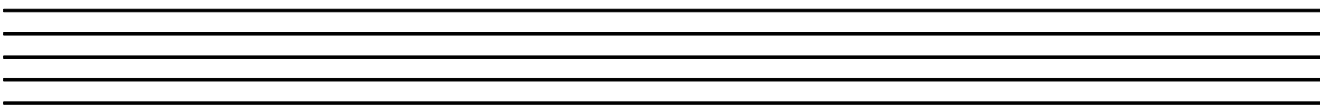
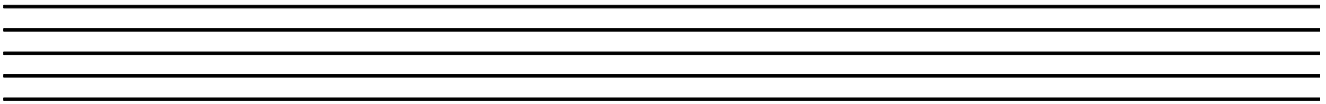
- Write a bass clef
- Write the tonic triad of C major



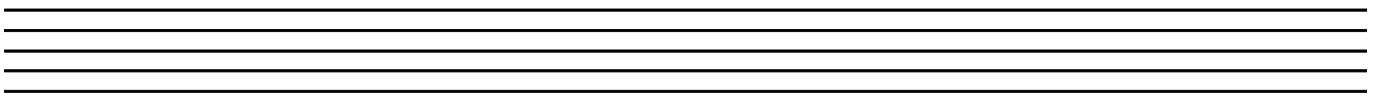
Question 5**MEMORY****Total Marks 10****A****10**

Write the song "Happy Birthday to You" from memory

- Do not write the words
- Include the phrasing

**Question 6****TRANSPOSITION****Total Marks 10****A****10**

Transpose this melody up into the key of C Major.



A

The following melody is written in the key of G major

| | |
|-----------|--|
| 10 | |
|-----------|--|

- a) Complete it by adding:
- i. The key signature of G major
 - ii. The time signature
 - iii. A tempo word above bar 1 that means to play very fast
 - iv. A sign below bar 1 to show the melody begins moderately loudly
 - v. A sign below bar 3 to show the melody gets gradually louder
 - vi. A sign below bar 4 to show the melody is loud
 - vii. A sign below bar 5 to show the melody gets gradually softer

| | |
|----------|--|
| 1 | |
| 1 | |
| 1 | |
| 1 | |
| 1 | |
| 1 | |
| 1 | |

b) Give the meaning of the following terms and signs:

- i. The curved line above the quavers in bar 6 _____

- ii. The dots above the quavers in bar 2 _____

- iii. The sign below bar 7 _____

| | |
|----------|--|
| 1 | |
| 1 | |
| 1 | |

B

| | |
|----------|--|
| 4 | |
|----------|--|

Give the English meaning of the following terms:

- i. *Allegro* _____
- ii. *Adagio* _____
- iii. *Accelerando* _____
- iv. *Diminuendo* _____