

Available Marks	Total Marks Gained
100	



Entrant Name

New Zealand Music Examinations Board

THEORY - FOURTH GRADE

Time: 9.30am- 12.30pm

Saturday 27th October 2018

Time Allowed: 3 Hours

Write your name in the box labelled 'Entrant Name'

Question 1	TIME and RHYTHM	Total Marks	
		14	

A		6	
----------	--	---	--

Complete these bars with rests.



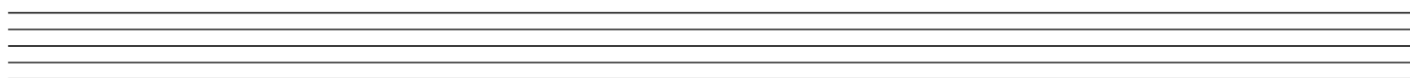
B		4	
----------	--	---	--

Add a time signature and barlines to this melody.



C		4	
----------	--	---	--

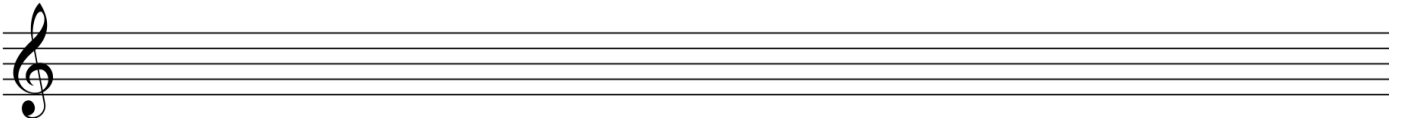
Add a time signature and barlines to this four bar melody, which starts on the last beat of the bar. Group the notes correctly.



Question 2**SCALES and MODULATION****Total Marks**
10**A****4**

Write the relative harmonic minor scale of E major scale.

- Use accidentals
- Use crotchets
- Write one octave ascending
- Mark each semitone with a slur

**B****4**

Write the following four key signatures, then write the notes as indicated. Use quavers.

D flat major
MediantB minor
DominantF minor
SudmediantF sharp major
Supertonic**C****2**

The following melody modulates and ends in a new key. State:

- The name of the new key
- The relationship of the new key to the original tonic key



Key of Modulation: _____

Relationship to original tonic key: _____

Question 3**INTERVALS****Total Marks**
10**A****4**

Name the following harmonic intervals (eg. major 3rd) written above the given tonic notes.



Question 3**INTERVALS contd.****B****4**

Write melodic intervals above the given notes.



Perfect 4th

Major 3rd

Augmented 5th

Minor 6th

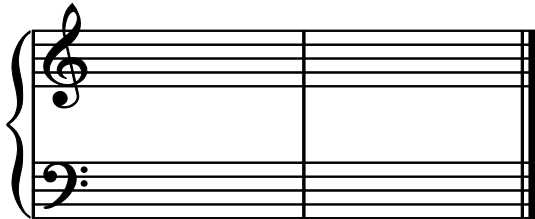
C**2**

Beside each interval write its inversion as a harmonic interval and name the inversion.

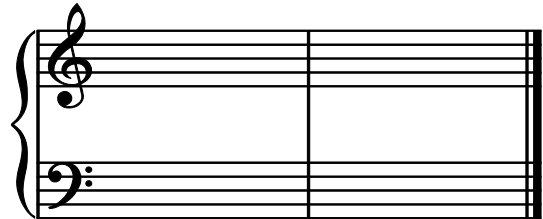
**Question 4****CADENCES and HARMONY****Total Marks****26****A****8**

Write the following cadences

- Use the correct key signatures
- Use minims



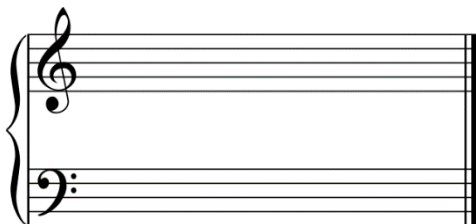
Plagal
F sharp major
Four part vocal style



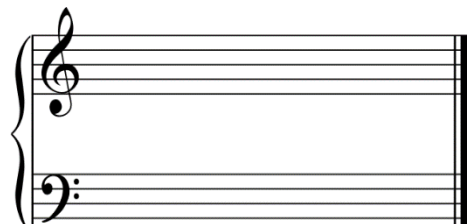
Perfect
C minor
Pianoforte style

B**4**

Write the following chords in four part vocal style. Write the key signatures. Use semibreves.



B major Chord IV
First inversion



F minor Chord V
Root position

Question 4**CADENCES and HARMONY contd.****C****14**

Complete the following in four part vocal style - S A T B – writing the appropriate cadences where marked with a bracket.

The musical notation shows a four-part vocal exercise in 4/4 time, key of B-flat major. The treble clef staff contains a melody with three phrases, each ending with a bracket indicating a cadence. The bass clef staff is empty for accompaniment.

Question 5a**MEMORY****Total Marks 8****A****8**

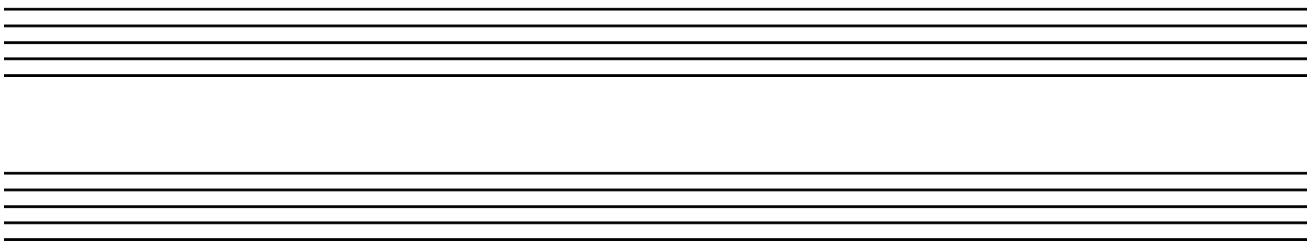
Write "God Defend New Zealand"

- Do not write the words
- Use phrasing
- Use the treble clef

Four sets of empty musical staves for writing the melody of "God Defend New Zealand". Each set consists of a single treble clef staff.

Question 5b**TRANSPOSITION****Total Marks 5****B****5**

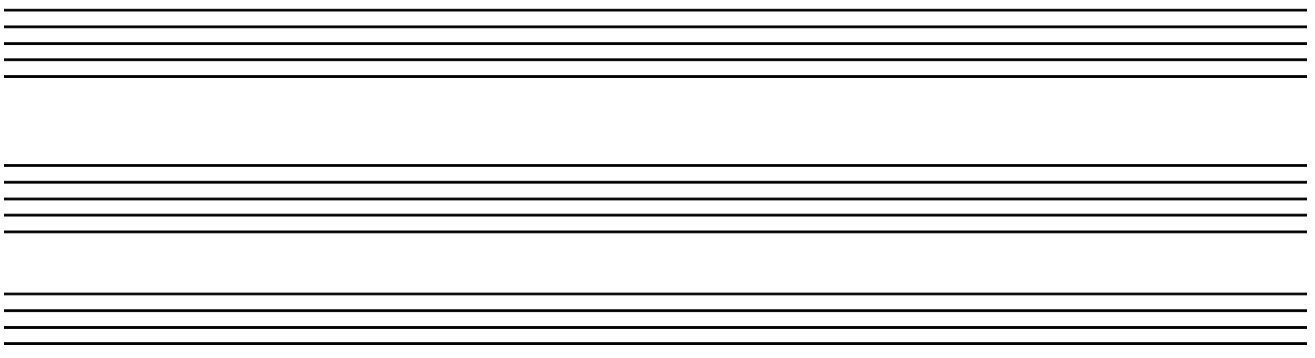
Transpose the following melody down into the key of G minor

**Question 6****COMPOSITION****Total Marks 10****EITHER****10**

Write a melody in D major to the following verse.

- Write the words clearly under the notes
- Use hyphens for words of more than one syllable
- Use phrase marks

*"Springtime, blossom time,
Forests ring with sound"*



Question 6

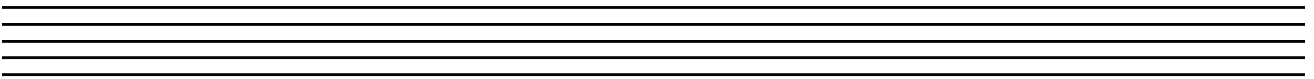
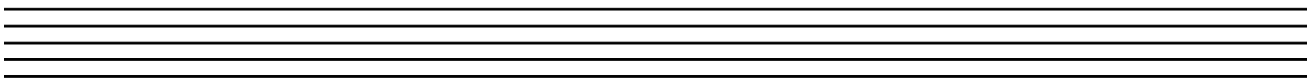
COMPOSITION contd

OR

10

Write a melody in D major to the following rhythm pattern.

- Add phrase marks
- Add an appropriate tempo word



Question 7

MUSICAL KNOWLEDGE

Total Marks 17

A

5

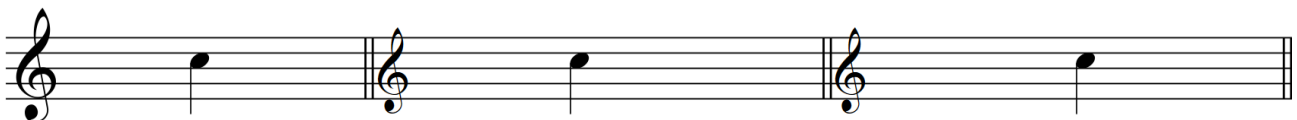
Give the meaning of each of these terms

- *Sul tasto* _____
- *Smorzando* _____
- *Tremelo* _____
- *Dolente* _____
- *Prestissimo* _____

B

3

Write the following ornaments as indicated over the notes.



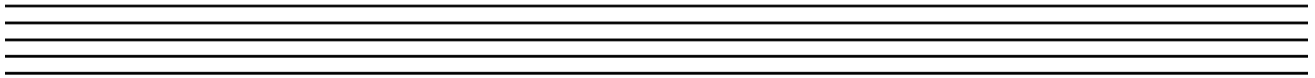
Upper mordent

Turn

Appoggiatura

C**4**

1. Write on the staff below the open string tuning of the cello and double bass. Use the correct clefs.



Cello

Double Bass

2. Describe two ways in which the tuning of the double bass differs from the cello

3. Explain vibrato as applied to a stringed instrument

D**3**

Name a suite movement which fits the following descriptions.

1. Simple triple time, fast continuous movement _____
2. Simple quadruple time, moderate speed, short anacrusis _____

E**2**

Name two composers whose suites contain dance movements.
