

Available Marks	Total Marks Gained
100	



Entrant Name

# New Zealand Music Examinations Board

## THEORY - FIRST GRADE

Time: 9.30am- 10.30am

Saturday 4th May 2019

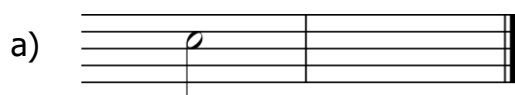
Time Allowed: 1 Hour

Write your name in the box labelled 'Entrant Name'

Question 1	TIME and RHYTHM	Total Marks
		16

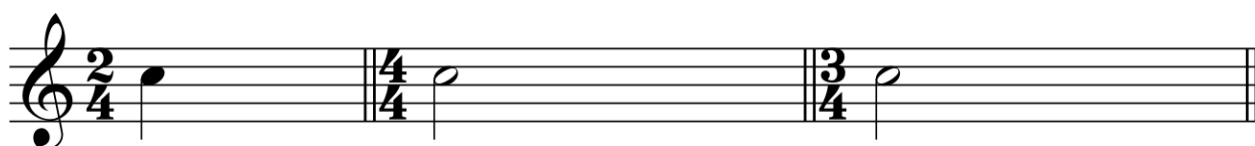
<b>A</b>		<b>6</b>
----------	--	----------

Under each of the notes write its time name (eg semibreve, minim, crotchet, quaver). Next to each of the notes at a) and c) write a rest that has the same time value.



<b>B</b>		<b>3</b>
----------	--	----------

Complete the following bars with a rest or rests in the correct order.



Add one rest at each of the places marked \* to make the bars complete.

<b>5</b>	
----------	--



<b>C</b>		<b>2</b>
----------	--	----------

Add a time signature to the following melody.



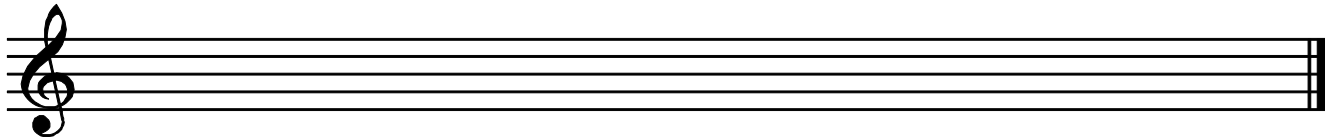
**Question 2****PITCH****Total Marks 18****A****6****Example:** C**6****B****6**

Write the following notes as semibreves.

E  
in a spaceG flat  
on a lineC natural  
in a spaceMiddle C  
on a lineE flat  
in a spaceFsharp  
on a line**Question 3****KEYS and SCALES****Total Marks  
20****A****5**

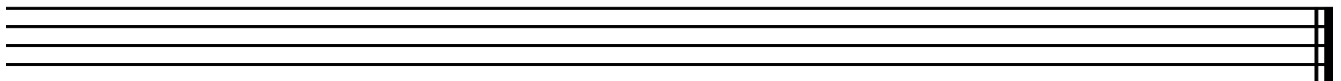
Write the scale of F major beginning in a space

- Write the key signature
- Use minims
- Write one octave ascending
- Mark each tone with a slur
- Draw a circle around the 5th degree of the scale

**B****5**

Write G major scale beginning in a space

- Write the bass clef
- Write the key signature
- Use semibreves
- Write one octave descending
- Mark each semitone with a slur

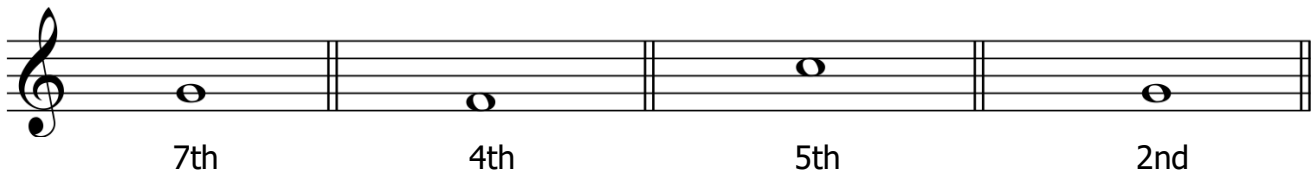


**Question 3****KEYS and SCALES contd.****10****C**

Write the scale degree numbers under the notes of this melody (eg 1, 2, 3, 4, etc)

**Question 4****INTERVALS and TRIADS****Total Marks  
12****A****4**

Write one note above each of these notes to make the following intervals. The given note is the major scale tonic note eg. G for G major scale

**B****4**

Number the following intervals (eg 2nd)

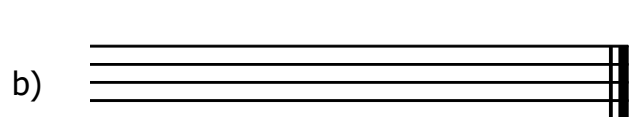
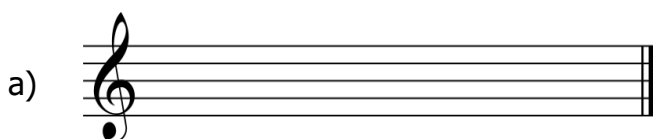
**C****4**

On the staff marked (a)

- Write the key signature of G major
- Write the tonic triad of G major
- Use semibreves

On the staff marked (b)

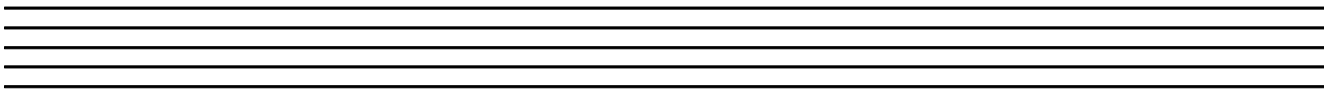
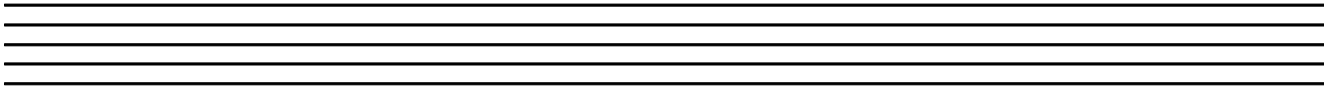
- Write a treble clef
- Write the tonic triad of C major
- Use semibreves



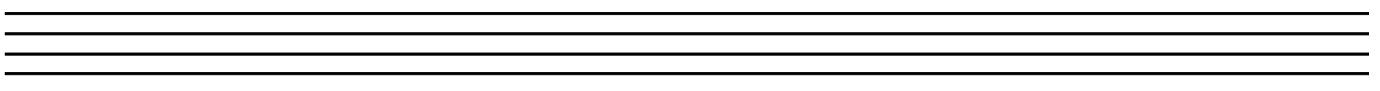
**Question 5****MEMORY****Total Marks**  
**10****A****10**

Write the song "Happy Birthday to You" from memory

- Do not write the words
- Include the phrasing

**Question 6****TRANSPOSITION****Total Marks 10****A****10**

Transpose this melody down into the key of F major. Write the correct key signature.



**A**

The following melody is written in the key of F major

**10**

a) Complete it by adding:

- i. The key signature of F major
- ii. The time signature
- iii. A tempo word above bar 1 that means to play very fast
- iv. A sign below bar 1 to show the melody begins moderately loudly
- v. A sign below bar 5 to show the melody gets gradually louder
- vi. A sign below bar 4 to show the melody is soft
- vii. A slur over the notes in bar 7

<b>1</b>	
<b>1</b>	
<b>1</b>	
<b>1</b>	
<b>1</b>	
<b>1</b>	
<b>1</b>	

b) Give the meaning of the following terms and signs:

- i. The dots above and below the notes in bar 2 \_\_\_\_\_
- ii. The sign under the notes in bar 3 \_\_\_\_\_
- iii. The sign above the note in bar 8 \_\_\_\_\_

<b>1</b>	
<b>1</b>	
<b>1</b>	

**B**

**4**

Give the English meaning of the following terms:

- i. *Allegro* \_\_\_\_\_
- ii. *Ritardando* \_\_\_\_\_
- iii. *Accelerando* \_\_\_\_\_
- iv. *Legato* \_\_\_\_\_