

| Available Marks | Total Marks Gained |
|-----------------|--------------------|
| 100 | |



| Entrant Name |
|--------------|
| |

New Zealand Music Examinations Board

THEORY - FIRST GRADE

Time: 9.30am- 10.30am

Saturday 13th June 2020

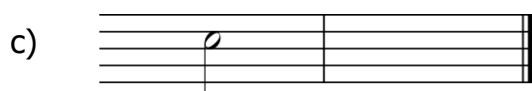
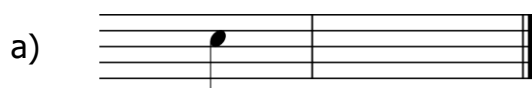
Time Allowed: 1 Hour

Write your name in the box labelled 'Entrant Name'

| Question 1 | TIME and RHYTHM | Total Marks |
|------------|-----------------|-------------|
| | | 16 |

| | | |
|----------|--|----------|
| A | | 6 |
|----------|--|----------|

- Under each of the notes write its time name (eg semibreve, minim, crotchet, quaver).
- Next to each of the notes at a) and c) write a rest that has the same time value as the note.



| | | |
|----------|--|----------|
| B | | 4 |
|----------|--|----------|

Complete the following bars with a rest or rests in the correct order.



Add one rest at each of the places marked * to make the bars complete.

| | |
|----------|--|
| 4 | |
|----------|--|

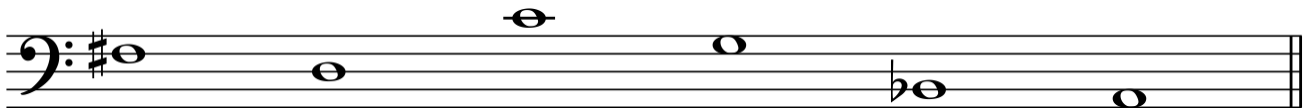


Question 1**TIME and RHYTHM Cont.****C****2**

Add a time signature to the following melody.

**Question 2****PITCH****Total Marks
18****A****6**

Write the letter names of the notes below. Use words for the sharp, flat and natural signs.

**Example:** F**6****B****6**

Write the following notes as semibreves.

E
in a spaceG flat
on a lineC natural
in a spaceMiddle C
on a lineE flat
in a spaceF sharp
on a line

Question 3**KEYS and SCALES****Total Marks**
20**A****5**

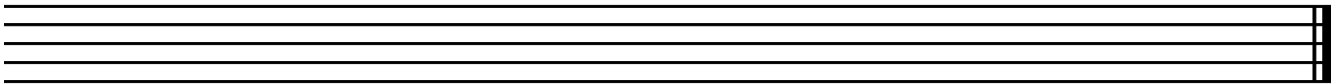
Write the scale of G major beginning on a line

- Write the key signature
- Use crotchets
- Write one octave ascending
- Mark each tone with a slur
- Draw a circle around the 3rd degree of the scale

**B****5**

Write F major scale beginning on a line

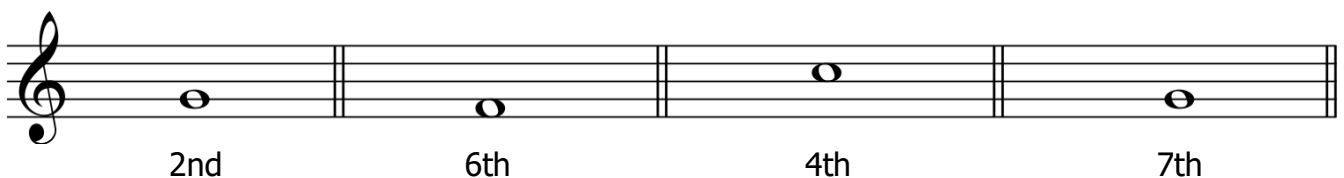
- Write the bass clef
- Write the key signature
- Use semibreves
- Write one octave descending
- Mark each semitone with a slur

**C****10**

Write the scale degree numbers under the notes of this melody (eg 1, 2, 3, 4, etc)

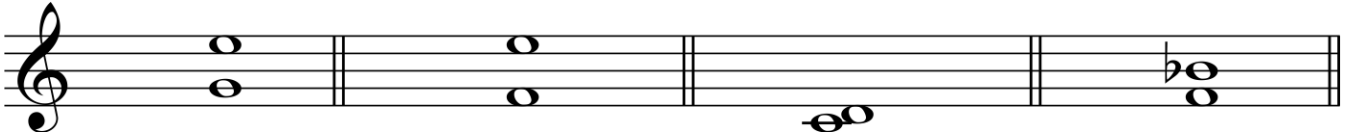
**Question 4****INTERVALS and TRIADS****Total Marks**
12**A****4**

Write one note above each of these notes to make the following intervals. The given note is the major scale tonic note eg. G for G major scale



Question 4**INTERVALS and TRIADS Cont.****B****4**

Number the following intervals (eg 2nd)

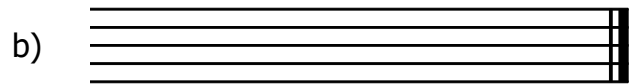
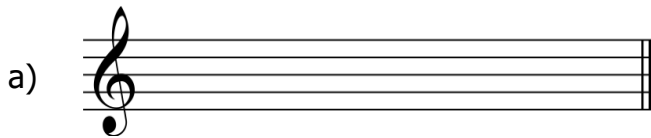
**C****4**

On the staff marked (a)

- Write the key signature of F major
- Write the tonic triad of F major
- Use semibreves

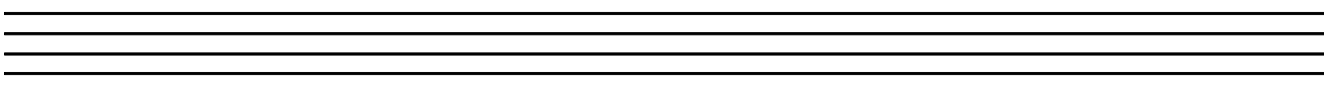
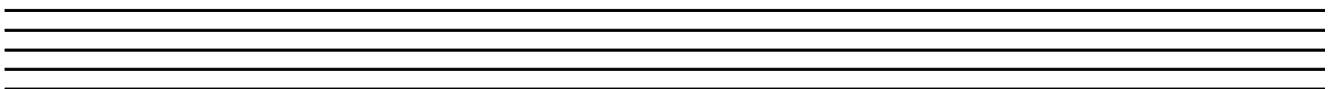
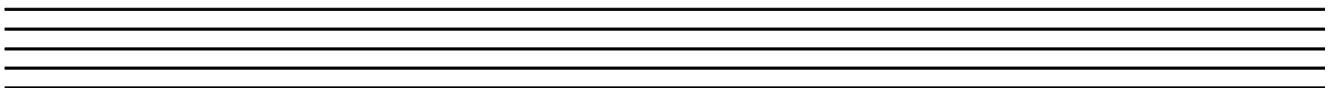
On the staff marked (b)

- Write a treble clef
- Write the tonic triad of C major
- Use semibreves

**Question 5****MEMORY****Total Marks****10****A****10**

Write the song "Happy Birthday to You" from memory

- Do not write the words
- Include the phrasing



Question 6

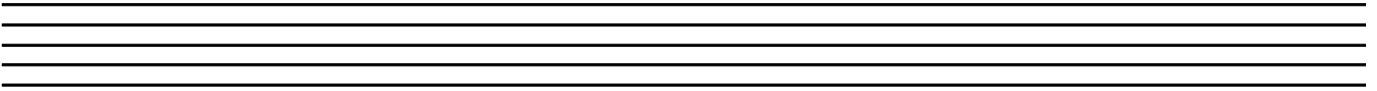
TRANSPOSITION

Total Marks 10

A

10

Transpose this melody down into the key of F major. Write the correct key signature.



Question 7

MUSICAL KNOWLEDGE

**Total Marks
14**

A

8

The following melody is written in the key of G major. Complete it by adding:

- i. The key signature of G major
- ii. The time signature
- iii. A tempo word above bar 1 that means to play at a moderate speed
- iv. A sign below bar 1 to show the melody begins loudly
- v. Staccato dots to the crotchets in bar 1
- vi. A sign below bar 3 to show the melody gets gradually softer
- vii. A pause over the note in bar 8

| | |
|----------|--|
| 2 | |
| 1 | |
| 1 | |
| 1 | |
| 1 | |
| 1 | |
| 1 | |



B**6**

Give the English meaning of the following terms:

- i. *Allegro* _____
- ii. *Ritardando* _____
- iii. *Accelerando* _____
- iv. *Legato* _____
- v. *Crescendo* _____
- vi. *Piano* _____