

Available Marks	Total Marks Gained
100	



Entrant Name

New Zealand Music Examinations Board

THEORY - FOURTH GRADE

Time: 9.30am- 12.30pm

Saturday 29th October 2022

Time Allowed: 3 Hours

Write your name in the box labelled 'Entrant Name'

Question 1	TIME and RHYTHM	Total Marks 14
------------	-----------------	----------------

A 6

Complete the following bars with rests in the correct order.



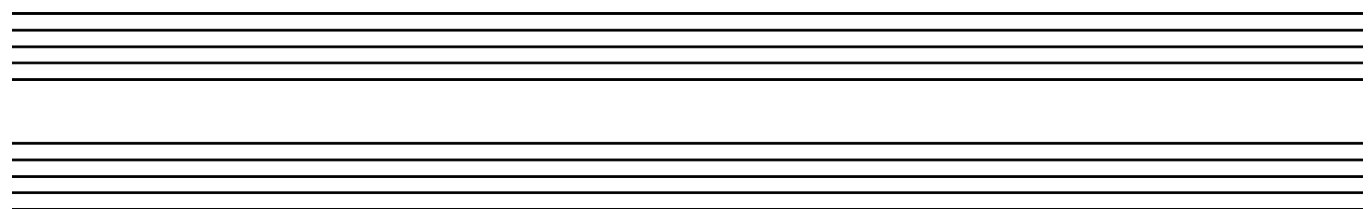
B 4

Add barlines to the following rhythm in $\frac{2}{2}$ time.



C 4

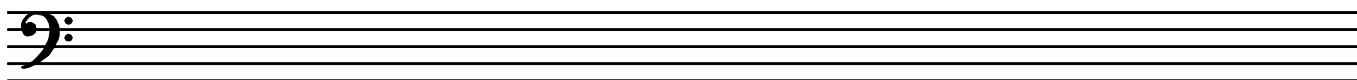
Group these notes correctly, adding barlines to make four bars of $\frac{6}{4}$ time.



Question 2**SCALES and MODULATION****Total Marks 11****A****5**

Write the scale of F harmonic minor

- Write the key signature
- Use semibreves
- Write one octave descending and one octave ascending
- Mark each tone with a slur

**B****4**

Write the following four key signatures, then write the notes as indicated. Use minims.

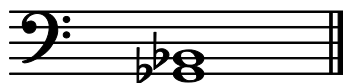
B flat minor
Leading noteG flat major
DominantB minor
SubmediantF sharp major
Supertonic**C****2**

The following melody modulates and ends in a new key. State:

- The name of the new key
- The relationship of the new key to the original tonic key

Key of
Modulation: _____Relationship to original
tonic key: _____**Question 3****INTERVALS****Total Marks 11****A****3**

Name the following intervals (eg Major 3rd) written above the tonic notes



Question 3**INTERVALS contd.****B****4**

Write these intervals as melodic intervals above the given tonic notes.



Augmented 4th

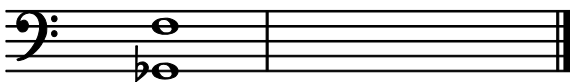
Major 7th

Augmented 5th

Diminished 5th

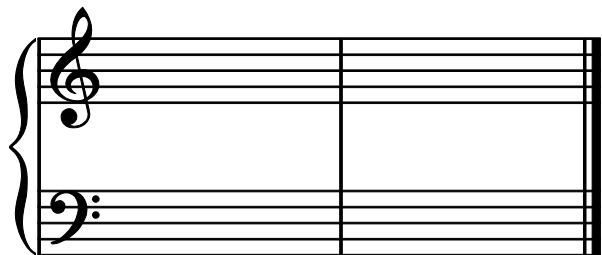
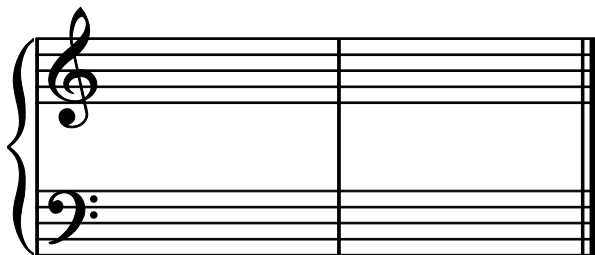
C**4**

Write the inversions of the following two intervals. Name the inversions.

**Question 4****CADENCES and HARMONY****Total Marks 23****A****8**

Write the following cadences

- Write the correct key signatures
- Use minims



Imperfect Cadence

F minor

Four Part Vocal Style

Plagal Cadence

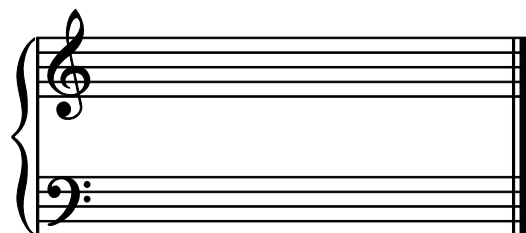
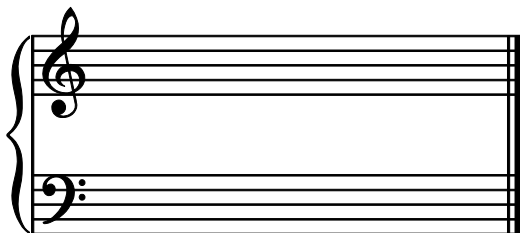
G major

Pianoforte Style

B**6**

Write the following chords in four-part vocal style

- Write accidentals not key signatures
- Use semibreves

G minor
Chord IV
First inversionE major
Chord II
Root position

Question 4**CADENCES and HARMONY contd.****9****C**

Complete the following in four parts - S A T B - ending each phrase with the cadences named.

A musical staff in treble clef with a key signature of one sharp (F#) and a time signature of 3/4. The melody consists of the following notes: C4 (quarter), D4 (quarter), E4 (quarter), F#4 (quarter), G4 (quarter), A4 (quarter), B4 (quarter), C5 (quarter), B4 (quarter), A4 (quarter), G4 (quarter), F#4 (quarter), E4 (quarter), D4 (quarter), C4 (quarter), ending with a half note C4. The bass staff is empty.

Imperfect

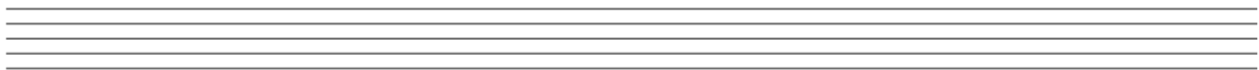
A musical staff in treble clef with a key signature of one sharp (F#) and a time signature of 3/4. The melody consists of the following notes: C4 (quarter), D4 (quarter), E4 (quarter), F#4 (quarter), G4 (quarter), A4 (quarter), B4 (quarter), C5 (quarter), B4 (quarter), A4 (quarter), G4 (quarter), F#4 (quarter), E4 (quarter), D4 (quarter), C4 (quarter), ending with a half note C4. The bass staff is empty.

Perfect

Question 5**MEMORY and TRANSPOSITION****Total Marks 15****A****7**

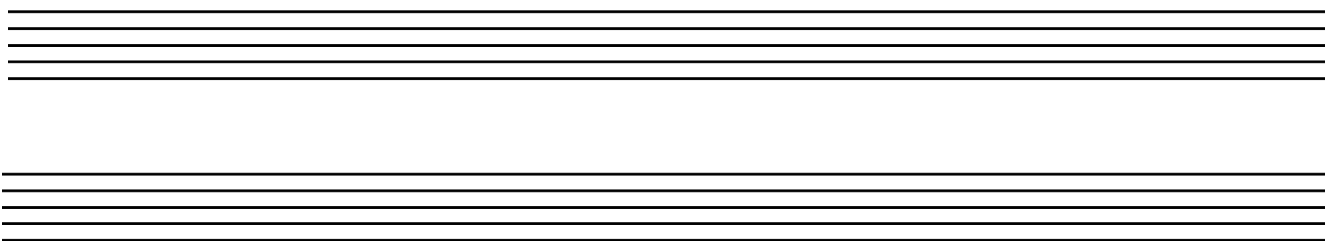
Write 'God Defend New Zealand'

- Do not write the words
- Use phrasing
- Use the treble clef



Question 5**MEMORY and TRANSPOSITION contd.****B****8**

Transpose the following melody up into the key of G minor.

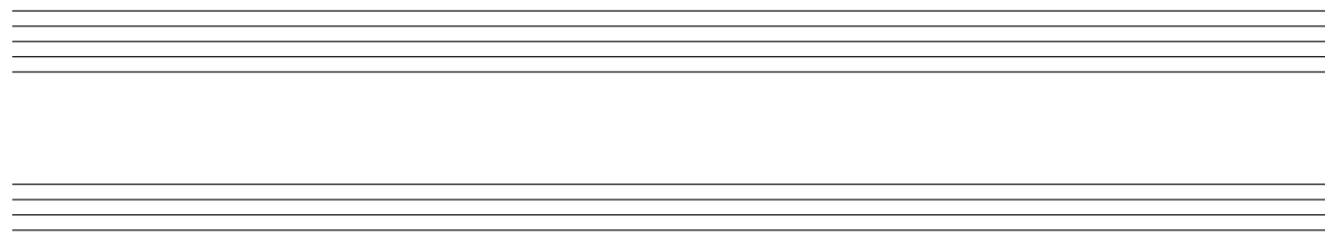
**Question 6****COMPOSITION****Total Marks 10****EITHER****10**

Write a melody in E flat major to the following couplet.

- Write the words clearly under the notes
- Use hyphens for words of more than one syllable
- Use separate stems for separate syllables
- Use phrase marks

*"In summer time when flowers do spring
And birds sit on each tree"*

17th Century



Question 6**COMPOSITION contd.****OR****10**

Write a melody in D Major to the following rhythm pattern.

- Add phrase marks
- Use a word at the beginning to indicate that it must be played at a moderate pace.



Blank musical staves for writing the melody in D Major.

Question 7**MUSICAL KNOWLEDGE****Total Marks 16****A****5**

Give the meaning of each of these terms

- i *Tenuto* _____
- ii *Agitato* _____
- iii *Pesante* _____
- iv *Piacevole* _____
- v *Sul tasto* _____

B**3**

Write the following signs, as indicated, over the notes.



A

B

C

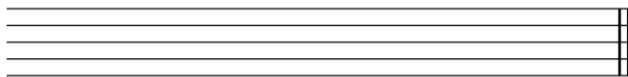
A - Trill

B - Appoggiatura

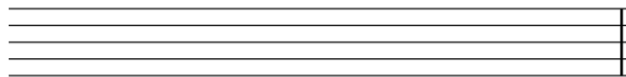
C - Lower Mordent

Question 7**MUSICAL KNOWLEDGE contd.****C****2**

Write the open string tunings of each of these stringed instruments - using the appropriate clefs.



Viola



Cello

D**4**

A. Name the four standard dances, in the order in which they appear in the Baroque Keyboard Suite.

B. Write a full description of the Gavotte.

E**2**

During the Baroque Period many composers wrote "Suites".

a) Define the term "Suite" _____

b) Name a composer who wrote "Suites" _____