

| Available Marks | Total Marks Gained |
|-----------------|--------------------|
| 100             |                    |



| Entrant Name |
|--------------|
|              |

# New Zealand Music Examinations Board

## THEORY - SECOND GRADE

Time: 9.30am- 11am

Saturday 28th October 2023

Time Allowed: 1 1/2 Hours

Write your name in the box labelled 'Entrant Name'

| Question 1 | TIME and RHYTHM | Total Marks 20 |
|------------|-----------------|----------------|
|------------|-----------------|----------------|

|          |  |          |  |
|----------|--|----------|--|
| <b>A</b> |  | <b>6</b> |  |
|----------|--|----------|--|

Add a rest or rests at each of the places marked \* to make the bars complete

a)

|          |  |
|----------|--|
| <b>6</b> |  |
|----------|--|

b)

|          |  |
|----------|--|
| <b>3</b> |  |
|----------|--|

c)

d)

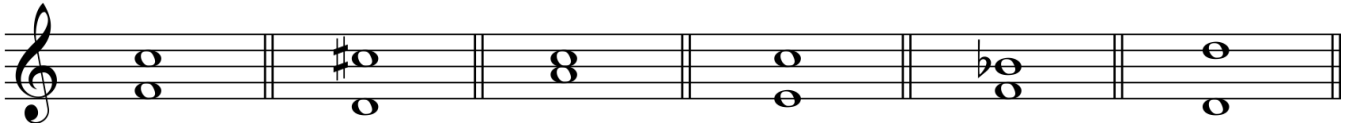
|          |  |          |  |
|----------|--|----------|--|
| <b>B</b> |  | <b>5</b> |  |
|----------|--|----------|--|

Add the missing barlines to the following, which starts with an anacrusis on the sixth quaver of the bar



**Question 3****INTERVALS and TRIADS****Total Marks 18****A****12**

Name each of these intervals by number and quality (eg major 6th)

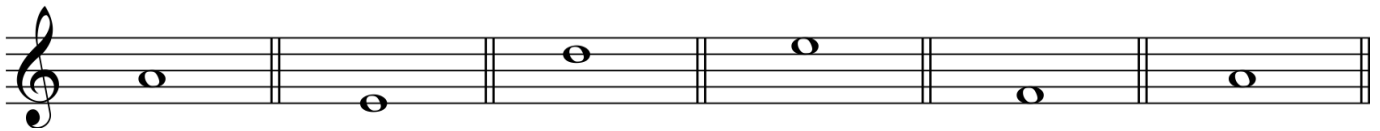


Number: \_\_\_\_\_

Quality: \_\_\_\_\_

**B****6**

Write these intervals above the given notes



Major 6th

Major 2nd

Minor 6th

Minor 3rd

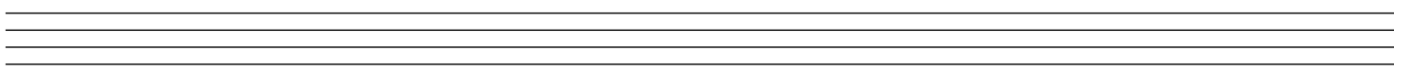
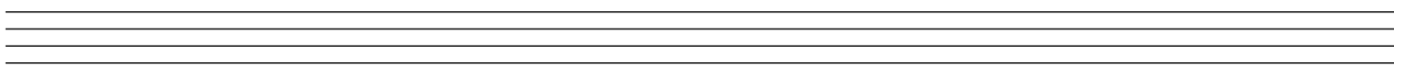
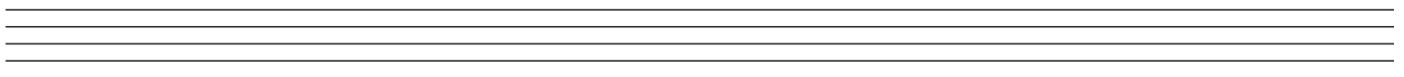
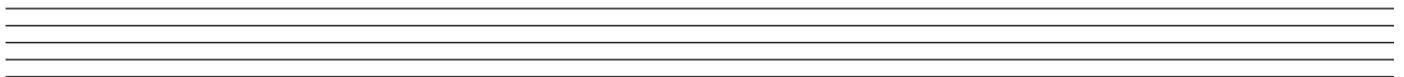
Perfect 4th

Major 7th

**Question 4****MEMORY****Total Marks 12****A****12**

Write the whole melody of 'Pokarekare Ana' from memory

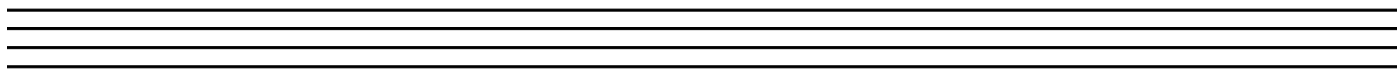
- Do not write the words
- Use the treble clef
- Mark the phrasing



A

10

Transpose this melody up into the key of A minor



A

8

Place a barline before each accented syllable or word in the following verse

Bouncing on driveways and gardens and roads

Small white round hailstones rained down on the ground

A

10

There are twelve bars in the melody below. Study it carefully then answer the following questions.

- 1) Add a word above the first note to show that the melody is to be played at a moderately fast speed
- 2) Add a crescendo sign below bar 3
- 3) Add staccato dots to the crotchets in bar 6
- 4) Add a pause sign over the note in bar 12
- 5) What is the meaning of "rit" below bar 8 \_\_\_\_\_  
\_\_\_\_\_
- 6) What is the meaning of "a tempo" below bar 9 \_\_\_\_\_  
\_\_\_\_\_
- 7) Name the form of the melody \_\_\_\_\_
- 8) Mark the sections of the melody with the letters A B or A B A

|          |  |
|----------|--|
| <b>1</b> |  |
| <b>1</b> |  |
| <b>1</b> |  |
| <b>1</b> |  |
| <b>1</b> |  |
| <b>1</b> |  |
| <b>2</b> |  |
| <b>2</b> |  |

B

8

Give the English meanings of the following terms:

1) *Largo* \_\_\_\_\_

2) *Adagio* \_\_\_\_\_

3) *Piu mosso* \_\_\_\_\_

4) *Accelerando* \_\_\_\_\_

5) *Diminuendo* \_\_\_\_\_

6) *Poco* \_\_\_\_\_

7) *Da capo al fine* \_\_\_\_\_

8) *Maestoso* \_\_\_\_\_