

# NZMEB PIANO

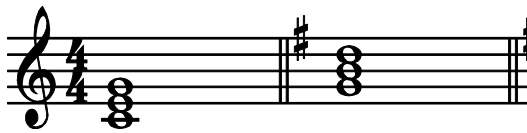
## TRIADS & CHORDAL PROGRESSIONS

### PRELIMINARY

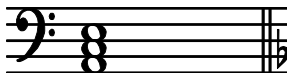
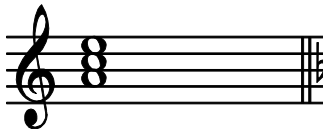
Major and Minor Triads to be Played **by Memory - Hands Separate**

C Major

G Major



A minor

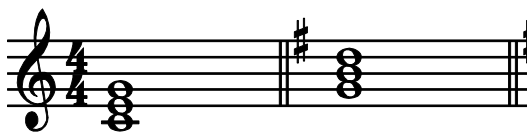


# GRADE 1

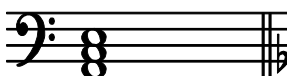
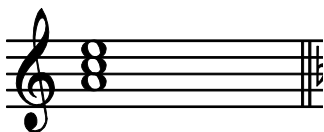
Major and Minor Triads to be played **by Memory - Hands Separate**

**C Major**

**G Major**



**A minor**



# GRADE 2

Major and Minor Triads I V I  
To be played **by Memory - Hands Separate**

## D Major

Musical notation for D Major triads. The top staff is in treble clef with a key signature of two sharps (F# and C#) and a 2/4 time signature. It shows three chords: I (D major), V (A major), and I (D major). The bottom staff is in bass clef with the same key signature and time signature, also showing three chords: I (D major), V (A major), and I (D major).

## D minor

Musical notation for D minor triads. The top staff is in treble clef with a key signature of one flat (Bb) and a 2/4 time signature. It shows three chords: I (D minor), V (F# minor), and I (D minor). The bottom staff is in bass clef with the same key signature and time signature, also showing three chords: I (D minor), V (F# minor), and I (D minor).

## A Major

Musical notation for A Major triads. The top staff is in treble clef with a key signature of three sharps (F#, C#, G#) and a 2/4 time signature. It shows three chords: I (A major), V (E major), and I (A major). The bottom staff is in bass clef with the same key signature and time signature, also showing three chords: I (A major), V (E major), and I (A major).

## A minor

Musical notation for A minor triads. The top staff is in treble clef with a key signature of no sharps or flats and a 2/4 time signature. It shows three chords: I (A minor), V (E# minor), and I (A minor). The bottom staff is in bass clef with the same key signature and time signature, also showing three chords: I (A minor), V (E# minor), and I (A minor).

# GRADE 3

Major and Minor Triads I IV V I  
To be played **by Memory - Hands Separate**

## E Major

Musical notation for E Major triads in treble clef, 2/4 time signature. The key signature has three sharps (F#, C#, G#). The sequence of chords is I, IV, V, I. The notes for each chord are: I (E, G#, B), IV (F#, A, C#), V (G#, B, D#), and I (E, G#, B).

Musical notation for E Major triads in bass clef, 2/4 time signature. The key signature has three sharps (F#, C#, G#). The sequence of chords is I, IV, V, I. The notes for each chord are: I (E, G#, B), IV (F#, A, C#), V (G#, B, D#), and I (E, G#, B).

## E minor

Musical notation for E minor triads in treble clef, 2/4 time signature. The key signature has one sharp (F#). The sequence of chords is I, IV, V, I. The notes for each chord are: I (E, G, B), IV (F#, A, C), V (G, B, D), and I (E, G, B).

Musical notation for E minor triads in bass clef, 2/4 time signature. The key signature has one sharp (F#). The sequence of chords is I, IV, V, I. The notes for each chord are: I (E, G, B), IV (F#, A, C), V (G, B, D), and I (E, G, B).

## B Major

Musical notation for B Major triads in treble clef, 2/4 time signature. The key signature has four sharps (F#, C#, G#, D#). The sequence of chords is I, IV, V, I. The notes for each chord are: I (B, D#, F#), IV (C#, E, G#), V (F#, A, D#), and I (B, D#, F#).

Musical notation for B Major triads in bass clef, 2/4 time signature. The key signature has four sharps (F#, C#, G#, D#). The sequence of chords is I, IV, V, I. The notes for each chord are: I (B, D#, F#), IV (C#, E, G#), V (F#, A, D#), and I (B, D#, F#).

## B minor

Musical notation for B minor triads in treble clef, 2/4 time signature. The key signature has two sharps (F#, C#). The sequence of chords is I, IV, V, I. The notes for each chord are: I (B, D, F), IV (C#, E, G), V (F#, A, C#), and I (B, D, F).

Musical notation for B minor triads in bass clef, 2/4 time signature. The key signature has two sharps (F#, C#). The sequence of chords is I, IV, V, I. The notes for each chord are: I (B, D, F), IV (C#, E, G), V (F#, A, C#), and I (B, D, F).

# GRADE 4

Major and Minor Chordal Progression I IV V I  
To be played **by Memory - Hands Together**

**F Major**

Musical notation for F Major in 3/4 time. The progression consists of four measures: I (F major), IV (C major), V (F major), and I (F major). The bass line consists of quarter notes F, C, F, and a half note F. The treble line consists of chords: F major (F, A, C), C major (C, E, G), F major (F, A, C), and F major (F, A, C).

I IV V I

**F minor**

Musical notation for F minor in 3/4 time. The progression consists of four measures: I (F minor), IV (C minor), V (F minor), and I (F minor). The bass line consists of quarter notes F, C, F, and a half note F. The treble line consists of chords: F minor (F, A-flat, C), C minor (C, E-flat, G), F minor (F, A-flat, C), and F minor (F, A-flat, C).

I IV V I

**B Flat Major**

Musical notation for B Flat Major in 3/4 time. The progression consists of four measures: I (B-flat major), IV (F major), V (B-flat major), and I (B-flat major). The bass line consists of quarter notes B-flat, F, B-flat, and a half note B-flat. The treble line consists of chords: B-flat major (B-flat, D, F), F major (F, A, C), B-flat major (B-flat, D, F), and B-flat major (B-flat, D, F).

I IV V I

**B Flat minor**

Musical notation for B Flat minor in 3/4 time. The progression consists of four measures: I (B-flat minor), IV (F minor), V (B-flat minor), and I (B-flat minor). The bass line consists of quarter notes B-flat, F, B-flat, and a half note B-flat. The treble line consists of chords: B-flat minor (B-flat, D, F), F minor (F, A-flat, C), B-flat minor (B-flat, D, F), and B-flat minor (B-flat, D, F).

I IV V I

# GRADE 5

Major and Minor Chordal Progression I IV V I  
To be played **by Memory - Hands Together** with **Legato Pedalling**

## B Flat Major

Musical notation for B Flat Major (Bb Major) in 3/4 time. The progression consists of four chords: I (Bb), IV (Eb), V (F), and I (Bb). The bass line plays a simple four-note sequence: Bb, Eb, F, Bb. The treble line plays chords in a legato style with a pedaling effect.

## B Flat minor

Musical notation for B Flat minor (Bb minor) in 3/4 time. The progression consists of four chords: I (Bb), IV (Eb), V (Fb), and I (Bb). The bass line plays a simple four-note sequence: Bb, Eb, Fb, Bb. The treble line plays chords in a legato style with a pedaling effect.

## E Flat Major

Musical notation for E Flat Major (Eb Major) in 3/4 time. The progression consists of four chords: I (Eb), IV (Ab), V (Bb), and I (Eb). The bass line plays a simple four-note sequence: Eb, Ab, Bb, Eb. The treble line plays chords in a legato style with a pedaling effect.

## E Flat minor

Musical notation for E Flat minor (Eb minor) in 3/4 time. The progression consists of four chords: I (Eb), IV (Ab), V (Bbb), and I (Eb). The bass line plays a simple four-note sequence: Eb, Ab, Bbb, Eb. The treble line plays chords in a legato style with a pedaling effect.

# GRADE 6

Major and Minor Chordal Progression I IV Ic V I  
To be played **by Memory - Hands Together** with **Legato Pedalling**

## E Flat Major

Musical notation for E Flat Major in 4/4 time. The right hand plays chords for I, IV, Ic, V, and I. The left hand plays a descending eighth-note scale: Bb, Ab, Gb, Fb, Eb, Db, Cb, Bb. The progression is: I (Eb, Gb, Bb), IV (Ab, Cb, Eb), Ic (Ab, Bb, Eb), V (Cb, Eb, Gb), I (Eb, Gb, Bb).

## E Flat minor

Musical notation for E Flat minor in 4/4 time. The right hand plays chords for I, IV, Ic, V, and I. The left hand plays a descending eighth-note scale: Bb, Ab, Gb, Fb, Eb, Db, Cb, Bb. The progression is: I (Eb, Gb, Bb), IV (Ab, Cb, Eb), Ic (Ab, Bb, Eb), V (Cb, Eb, Gb), I (Eb, Gb, Bb).

## A Flat Major

Musical notation for A Flat Major in 4/4 time. The right hand plays chords for I, IV, Ic, V, and I. The left hand plays a descending eighth-note scale: Gb, Fb, Eb, Db, Cb, Bb, Ab, Gb. The progression is: I (Ab, Cb, Eb), IV (Db, Fb, Ab), Ic (Db, Eb, Ab), V (Fb, Ab, Cb), I (Ab, Cb, Eb).

## A Flat minor

Musical notation for A Flat minor in 4/4 time. The right hand plays chords for I, IV, Ic, V, and I. The left hand plays a descending eighth-note scale: Gb, Fb, Eb, Db, Cb, Bb, Ab, Gb. The progression is: I (Ab, Cb, Eb), IV (Db, Fb, Ab), Ic (Db, Eb, Ab), V (Fb, Ab, Cb), I (Ab, Cb, Eb).

# GRADE 7

Major and Minor Chordal Progression I IIb Ic V I  
To be played **by Memory - Hands Together** with **Legato Pedalling**

## F Sharp Major

Musical notation for F Sharp Major in 4/4 time. The key signature has five sharps (F#, C#, G#, D#, A#). The progression consists of five chords: I (F#), IIb (C#), Ic (G#), V (D#), and I (F#). The bass line plays a sequence of quarter notes: F#, G#, A#, B#. The treble line plays chords in the right hand.

I IIb Ic V I

## F Sharp minor

Musical notation for F Sharp minor in 4/4 time. The key signature has five sharps (F#, C#, G#, D#, A#). The progression consists of five chords: I (F#), IIb (C#), Ic (G#), V (D#), and I (F#). The bass line plays a sequence of quarter notes: F#, G#, A#, B#. The treble line plays chords in the right hand.

I IIb Ic V I

## C Sharp Major

Musical notation for C Sharp Major in 4/4 time. The key signature has six sharps (F#, C#, G#, D#, A#, E#). The progression consists of five chords: I (C#), IIb (G#), Ic (D#), V (F#), and I (C#). The bass line plays a sequence of quarter notes: C#, D#, E#, F#. The treble line plays chords in the right hand.

I IIb Ic V I

## C Sharp minor

Musical notation for C Sharp minor in 4/4 time. The key signature has six sharps (F#, C#, G#, D#, A#, E#). The progression consists of five chords: I (C#), IIb (G#), Ic (D#), V (F#), and I (C#). The bass line plays a sequence of quarter notes: C#, D#, E#, F#. The treble line plays chords in the right hand.

I IIb Ic V I