

Grade 2 Performance Violin Scales

A Major

Separate bows (upper half)

$\text{♩} = 96$

Slurred

$\text{♩} = 96$

Spiccato (off the string)

$\text{♩} = 96$

Martelé (mid bow to upper half)

$\text{♩} = 96$

Bb Major

Separate bows (upper half)

♩=96

Slurred

♩=96

Spiccato (off the string)

♩=96

Martelé (mid bow to upper half)

♩=96

G Major

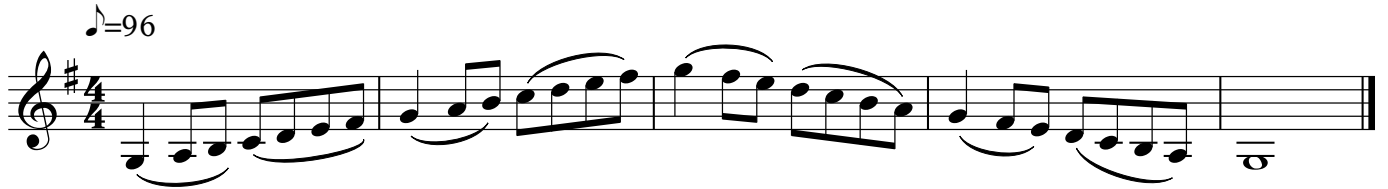
Separate bows (upper half)

$\text{♩} = 96$



Slurred

$\text{♩} = 96$



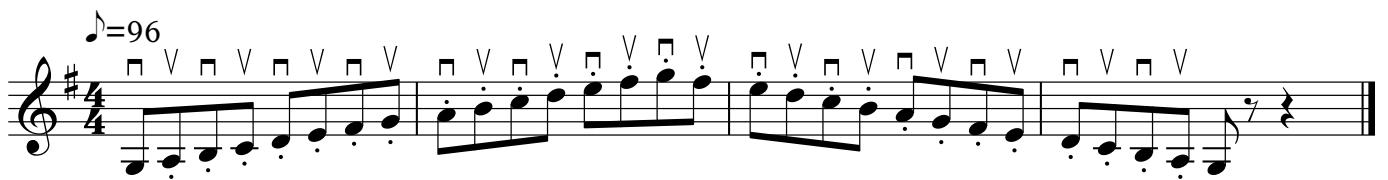
Spiccato (off the string)

$\text{♩} = 96$



Martelé (mid bow to upper half)

$\text{♩} = 96$



F Major

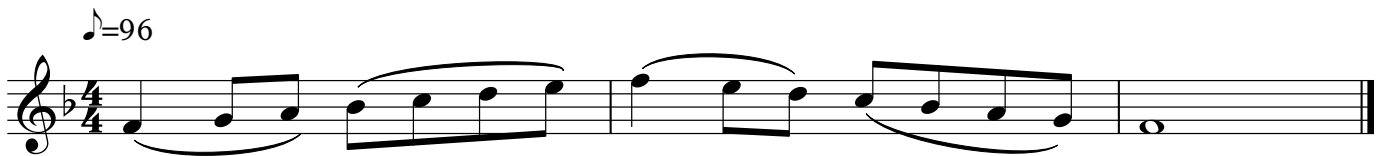
Separate bows (upper half)

♩=96



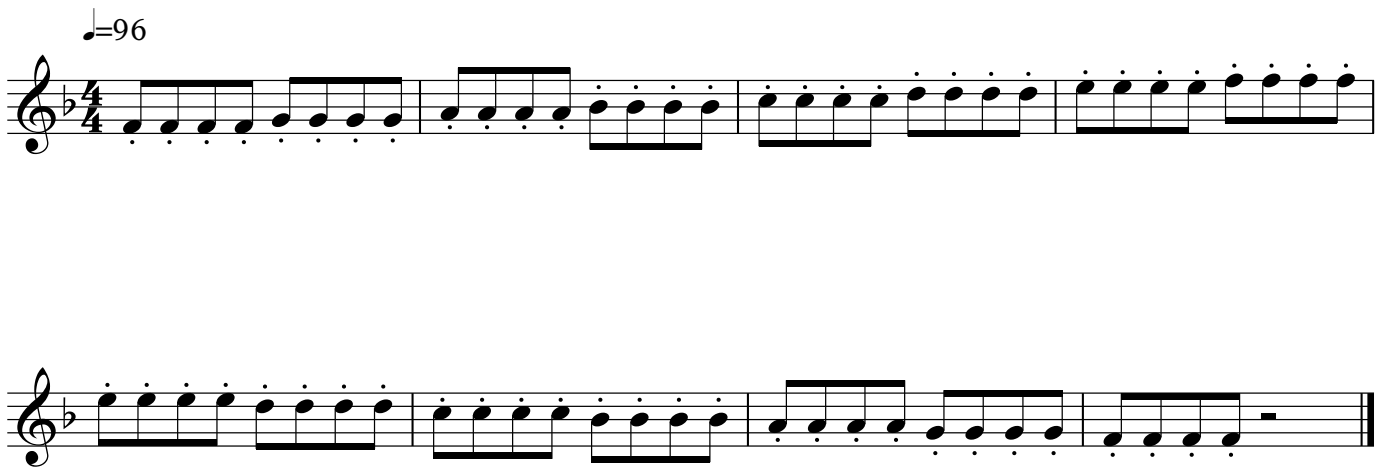
Slurred

♩=96



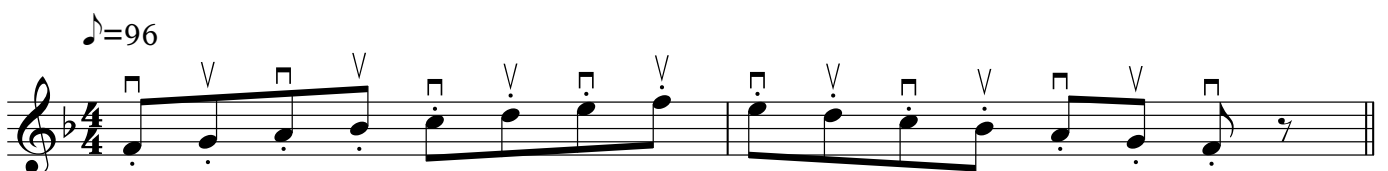
Spiccato (off the string)

♩=96



Martelé (mid bow to upper half)

♩=96



G Harmonic Minor

Separate bows (upper half)

♩=96



Musical notation in G Harmonic Minor (one flat, 4/4 time), tempo 96. The piece consists of a single staff with a treble clef. It features a sequence of eighth and sixteenth notes, including slurs and accents, ending with a whole note G.

Slurred

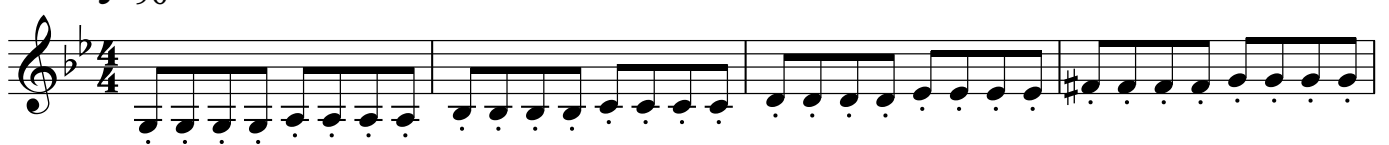
♩=96



Musical notation in G Harmonic Minor (one flat, 4/4 time), tempo 96. The piece consists of a single staff with a treble clef. It features a sequence of eighth and sixteenth notes, including slurs and accents, ending with a whole note G.

Spiccato (off the string)

♩=96



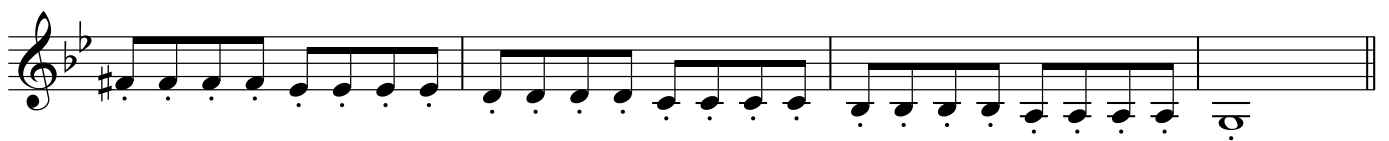
Musical notation in G Harmonic Minor (one flat, 4/4 time), tempo 96. The piece consists of a single staff with a treble clef. It features a sequence of eighth and sixteenth notes, including slurs and accents, ending with a whole note G.



Musical notation in G Harmonic Minor (one flat, 4/4 time), tempo 96. The piece consists of a single staff with a treble clef. It features a sequence of eighth and sixteenth notes, including slurs and accents, ending with a whole note G.



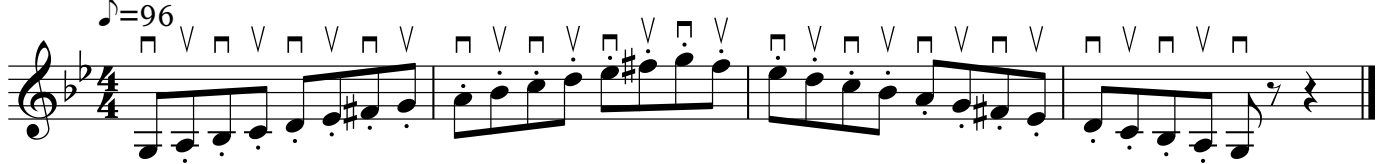
Musical notation in G Harmonic Minor (one flat, 4/4 time), tempo 96. The piece consists of a single staff with a treble clef. It features a sequence of eighth and sixteenth notes, including slurs and accents, ending with a whole note G.



Musical notation in G Harmonic Minor (one flat, 4/4 time), tempo 96. The piece consists of a single staff with a treble clef. It features a sequence of eighth and sixteenth notes, including slurs and accents, ending with a whole note G.

Martelé (mid bow to upper half)

♩=96



Musical notation in G Harmonic Minor (one flat, 4/4 time), tempo 96. The piece consists of a single staff with a treble clef. It features a sequence of eighth and sixteenth notes, including slurs and accents, ending with a whole note G. Above the notes are 'V' marks indicating martelé bowing.

A Melodic Minor

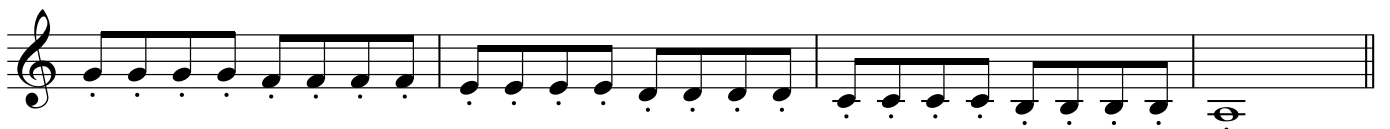


Slurred



Spiccato (off the string)

♩=96



Martelé (mid bow to upper half)

♩=96



D Melodic Minor

Seperate bows (upper half)

♩=96



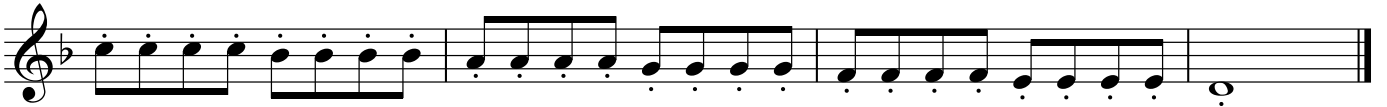
Seperate bows (upper half)

♩=96



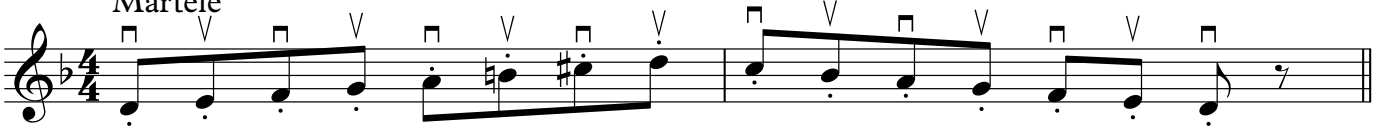
Spiccato

♩=96



♩=96

Martele



G Minor Arpeggio

Détaché

Musical notation for G Minor Arpeggio, Detached style. The piece is in 3/4 time with a tempo of 84. The melody consists of quarter notes: G3, A3, Bb3, C4, D4, E4, F4, G4, followed by a whole note G4. The notes are marked with 'V' (accents) and '□' (fingerings).

Legato

Musical notation for G Minor Arpeggio, Legato style. The piece is in 3/4 time with a tempo of 84. The melody consists of quarter notes: G3, A3, Bb3, C4, D4, E4, F4, G4, followed by a whole note G4. The notes are marked with 'V' (accents) and '□' (fingerings). Slurs connect the notes in pairs: G-A, B-C, D-E, and F-G.

A Minor Arpeggio

Détaché

Musical notation for A Minor Arpeggio, Detached style. The piece is in 3/4 time with a tempo of 84. The melody consists of quarter notes: A3, B3, C4, D4, E4, F4, G4, A4, followed by a whole note A4. The notes are marked with 'V' (accents) and '□' (fingerings).

Legato

Musical notation for A Minor Arpeggio, Legato style. The piece is in 3/4 time with a tempo of 84. The melody consists of quarter notes: A3, B3, C4, D4, E4, F4, G4, A4, followed by a whole note A4. The notes are marked with 'V' (accents) and '□' (fingerings). Slurs connect the notes in pairs: A-B, C-D, E-F, and G-A.

D Minor Arpeggio

Détaché

Musical notation for D Minor Arpeggio, Detached style. The piece is in 3/4 time with a tempo of 84. The melody consists of quarter notes: D3, E3, F3, G3, A3, B3, C4, D4, followed by a whole note D4. The notes are marked with 'V' (accents) and '□' (fingerings).

Legato

Musical notation for D Minor Arpeggio, Legato style. The piece is in 3/4 time with a tempo of 84. The melody consists of quarter notes: D3, E3, F3, G3, A3, B3, C4, D4, followed by a whole note D4. The notes are marked with 'V' (accents) and '□' (fingerings). Slurs connect the notes in pairs: D-E, F-G, and A-B.

G Major Arpeggio

Détaché

♩=84

Musical notation for G Major Arpeggio, Detached style. The piece is in G major (one sharp) and 3/4 time. It consists of a single melodic line on a treble clef staff. The notes are G4, A4, B4, C5, B4, A4, G4. The first and last notes are marked with a square box. There are three 'V' marks above the staff, one above each of the three eighth notes (A4, B4, C5).

Legato

♩=84

Musical notation for G Major Arpeggio, Legato style. The piece is in G major (one sharp) and 3/4 time. It consists of a single melodic line on a treble clef staff. The notes are G4, A4, B4, C5, B4, A4, G4. The first and last notes are marked with a square box. There are three 'V' marks above the staff, one above each of the three eighth notes (A4, B4, C5). Slurs connect the notes G4-A4-B4, C5-B4-A4, and B4-A4-G4.

Bb Major Arpeggio

Détaché

♩=84

Musical notation for Bb Major Arpeggio, Detached style. The piece is in Bb major (two flats) and 3/4 time. It consists of a single melodic line on a treble clef staff. The notes are Bb4, C5, D5, Eb5, D5, C5, Bb4. The first and last notes are marked with a square box. There are three 'V' marks above the staff, one above each of the three eighth notes (C5, D5, Eb5).

Legato

♩=84

Musical notation for Bb Major Arpeggio, Legato style. The piece is in Bb major (two flats) and 3/4 time. It consists of a single melodic line on a treble clef staff. The notes are Bb4, C5, D5, Eb5, D5, C5, Bb4. The first and last notes are marked with a square box. There are three 'V' marks above the staff, one above each of the three eighth notes (C5, D5, Eb5). Slurs connect the notes Bb4-C5-D5, Eb5-D5-C5, and D5-C5-Bb4.

F Major Arpeggio

Détaché

♩=84

Musical notation for F Major Arpeggio, Detached style. The piece is in F major (one flat) and 3/4 time. It consists of a single melodic line on a treble clef staff. The notes are F4, G4, A4, Bb4, A4, G4, F4. The first and last notes are marked with a square box. There are two 'V' marks above the staff, one above the eighth note (A4) and one above the quarter note (Bb4).

Legato

♩=84

Musical notation for F Major Arpeggio, Legato style. The piece is in F major (one flat) and 3/4 time. It consists of a single melodic line on a treble clef staff. The notes are F4, G4, A4, Bb4, A4, G4, F4. The first and last notes are marked with a square box. There are two 'V' marks above the staff, one above the eighth note (A4) and one above the quarter note (Bb4). Slurs connect the notes F4-G4-A4, Bb4-A4-G4, and A4-G4-F4.