

Grade 4 Performance Violin Scales

E MAJOR

Détaché (upper half)

♩=120

Spiccato

♩=126

Hook Stroke

♩=110

Seven Note Slur

♩=66

B Major

Détaché (upper half)

$\text{♩} = 120$

Spiccato

$\text{♩} = 126$

Hook Stroke

$\text{♩} = 110$

Seven Note Slur

$\text{♩} = 66$

C Major

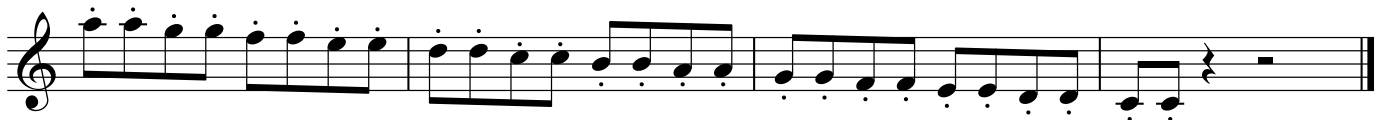
Détaché (upper half)

♩=120



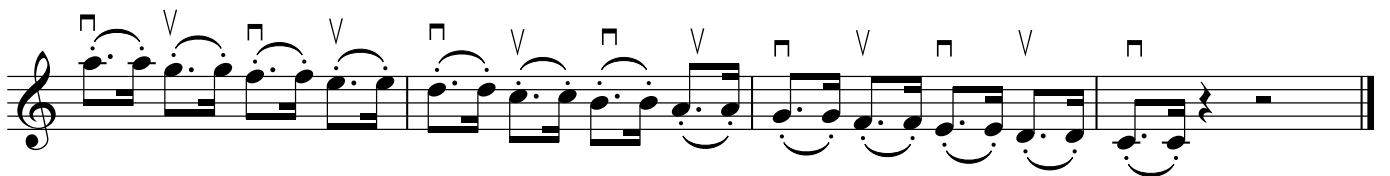
Spiccato

♩=126



Hook Stroke

♩=110



Seven Note Slur

♩=66



D Major

Détaché (upper half)

$\text{♩} = 120$

Spiccato

$\text{♩} = 126$

Hook Stroke

$\text{♩} = 110$

Seven Note Slur

$\text{♩} = 66$

E Harmonic Minor

Détaché (upper half)

♩=120

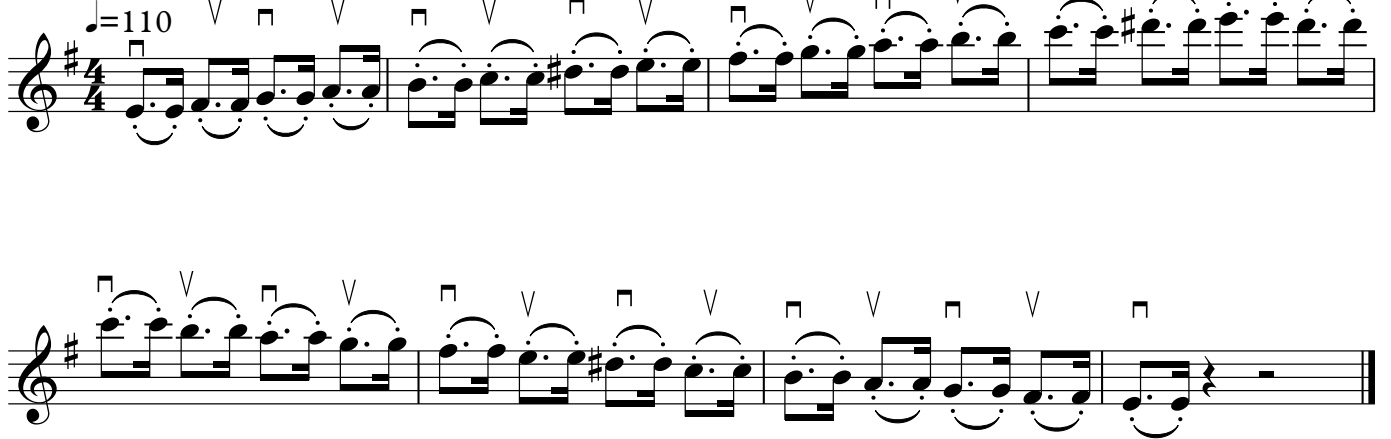


Spiccato ♩=126



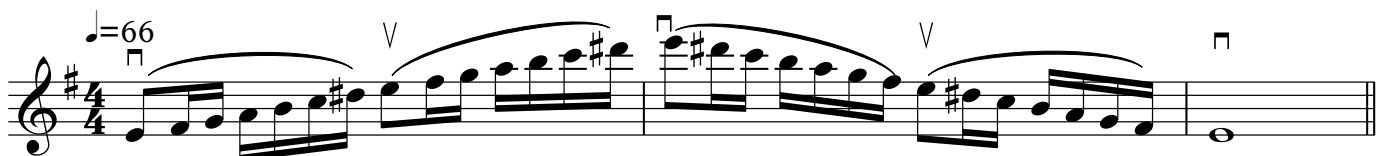
Hook Stroke

♩=110



Seven Note Slur

♩=66



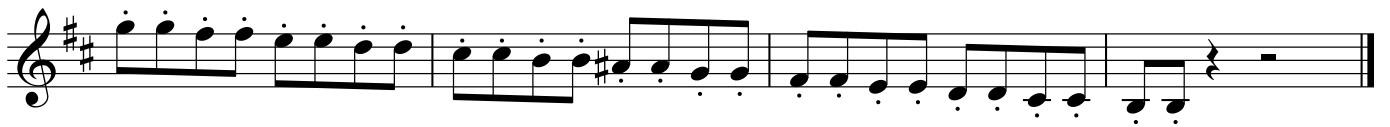
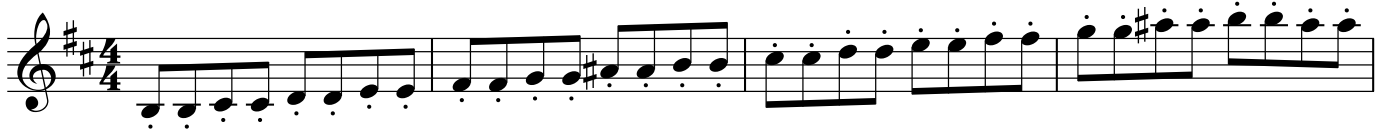
B Harmonic Minor

Détaché (upper half)

♩=120

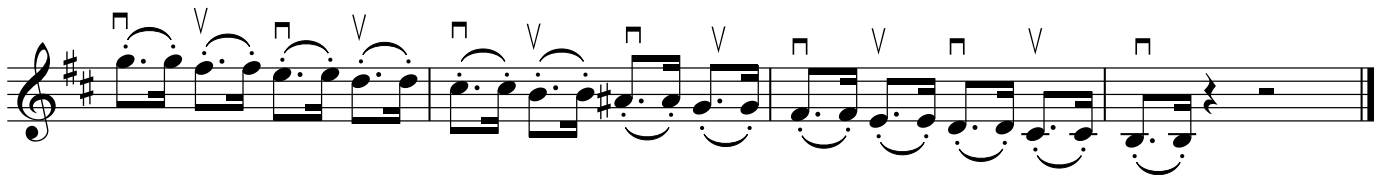


Spiccato ♩=126



Hook Stroke

♩=110



Seven Note Slur

♩=66



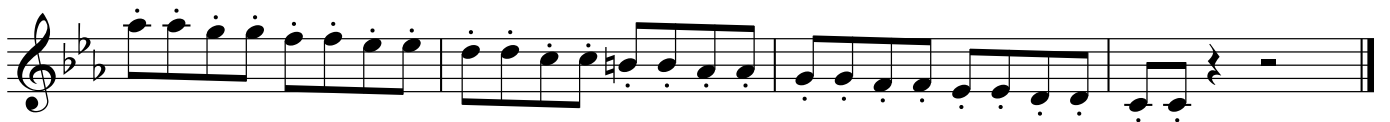
C Harmonic Minor

Détaché (upper half)

♩=120

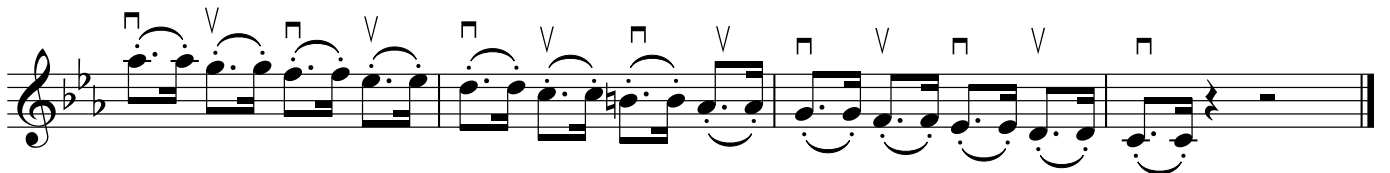
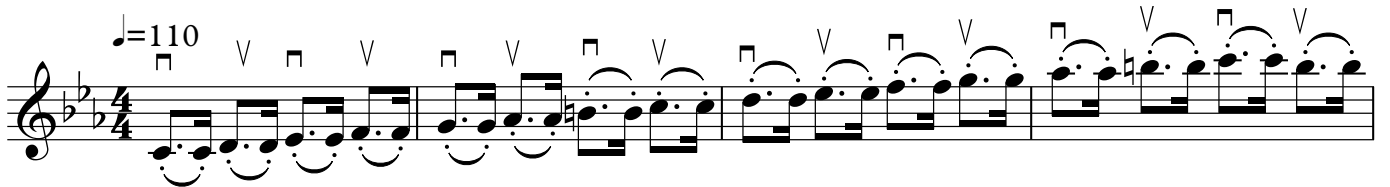


Spiccato ♩=126



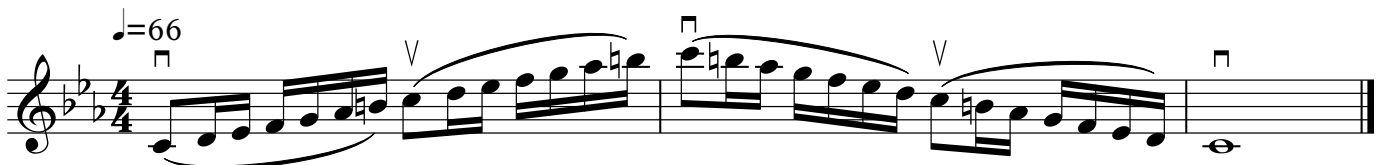
Hook Stroke

♩=110



Seven Note Slur

♩=66



D Harmonic Minor

Détaché (upper half)

♩=120



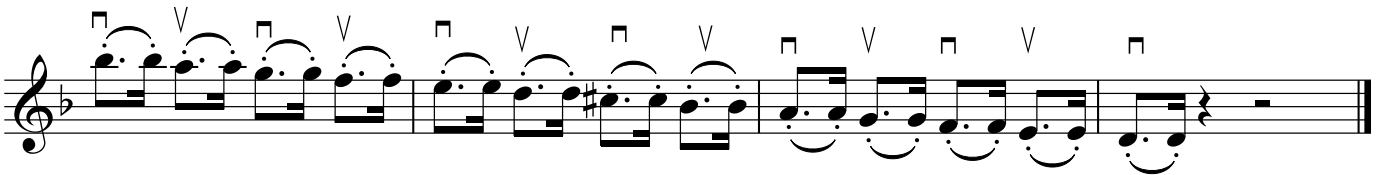
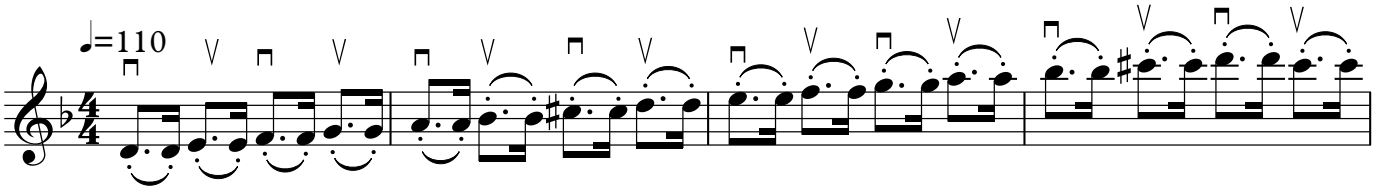
Spiccato

♩=126



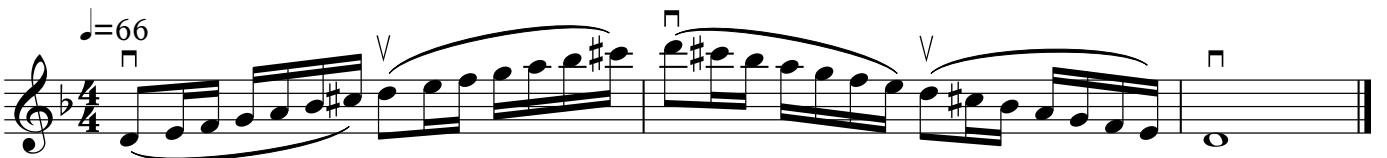
Hook Stroke

♩=110



Seven Note Slur

♩=66



G Chromatic

$\text{♩} = 112$

The musical score for 'G Chromatic' is written in G major (one sharp) and 4/4 time. The tempo is marked as $\text{♩} = 112$. The piece consists of two staves of music. The first staff contains the first four measures, and the second staff contains the next four measures. The music features a chromatic scale starting on G4, moving up and then down, with various articulations like accents and slurs.

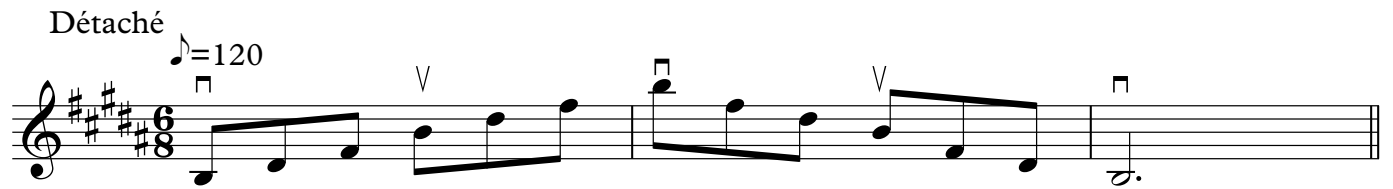
Bb Chromatic

$\text{♩} = 112$

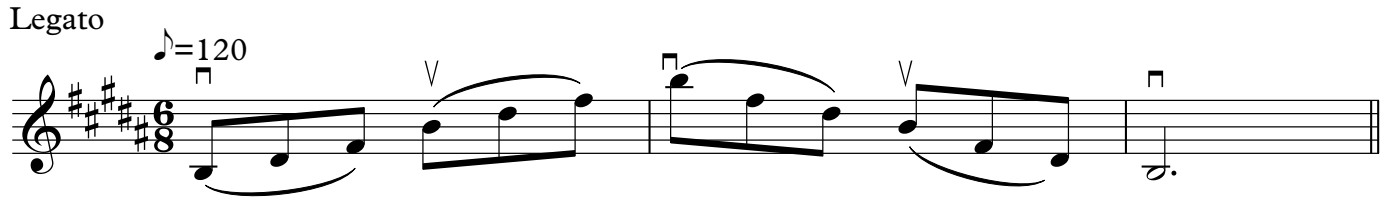
The musical score for 'Bb Chromatic' is written in Bb major (two flats) and 4/4 time. The tempo is marked as $\text{♩} = 112$. The piece consists of two staves of music. The first staff contains the first four measures, and the second staff contains the next four measures. The music features a chromatic scale starting on Bb4, moving up and then down, with various articulations like accents and slurs.

B Major Arpeggio

Détaché $\text{♩} = 120$



Legato $\text{♩} = 120$

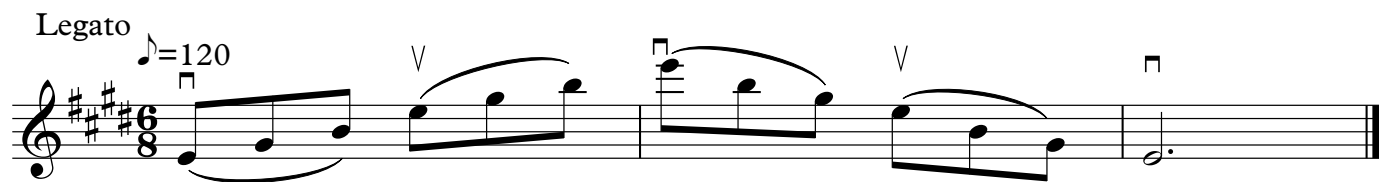


E Major Arpeggio

Détaché $\text{♩} = 120$



Legato $\text{♩} = 120$

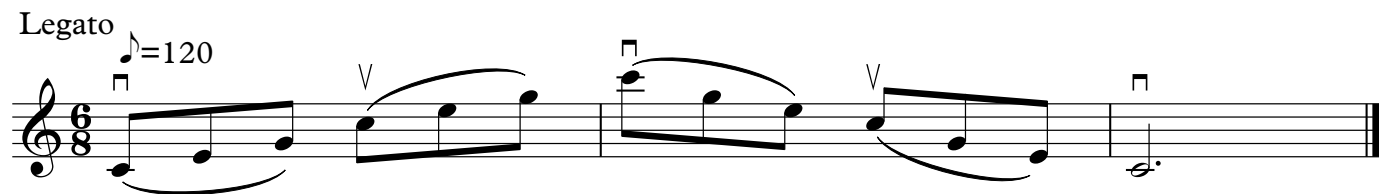


C Major Arpeggio

Détaché $\text{♩} = 120$

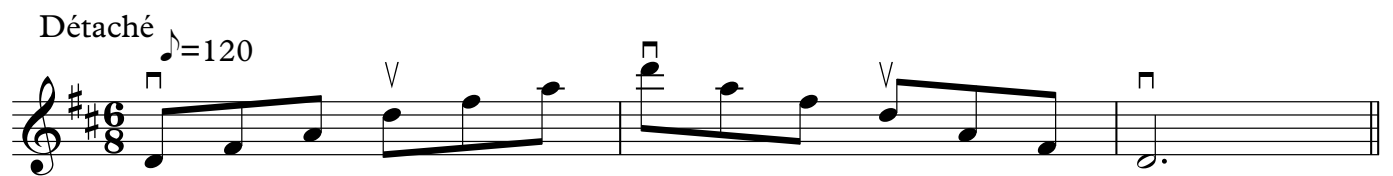


Legato $\text{♩} = 120$

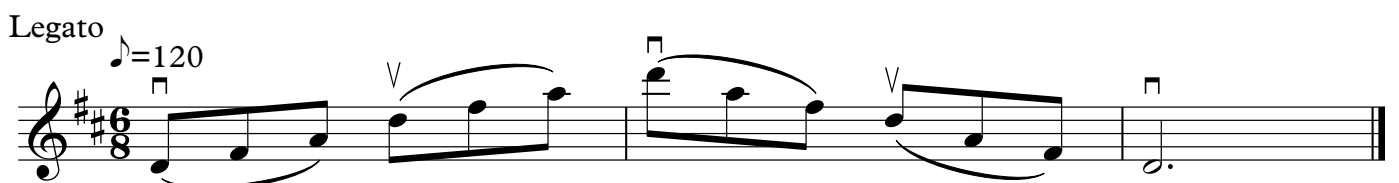


D Major Arpeggio

Détaché $\text{♩} = 120$

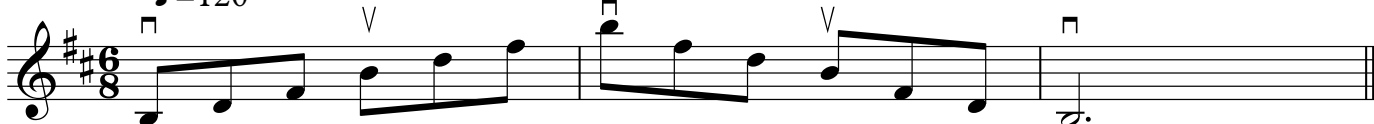


Legato $\text{♩} = 120$

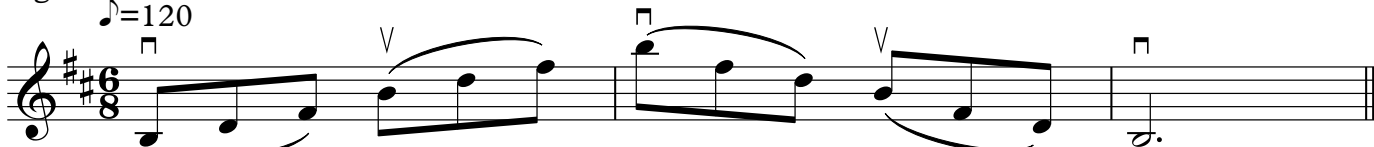


B Minor Arpeggio

Détaché $\text{♩} = 120$

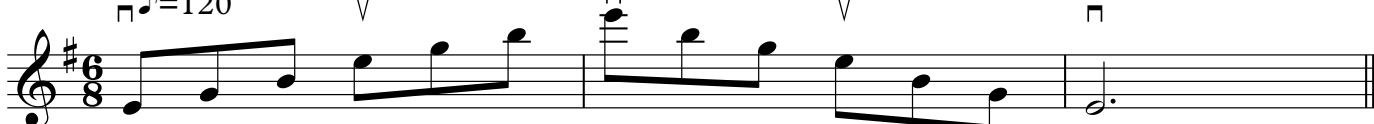


Legato $\text{♩} = 120$




E Minor Arpeggio

Détaché $\text{♩} = 120$



Legato $\text{♩} = 120$



C Minor Arpeggio

Détaché $\text{♩} = 120$



Legato $\text{♩} = 120$



D Minor Arpeggio

Détaché $\text{♩} = 120$



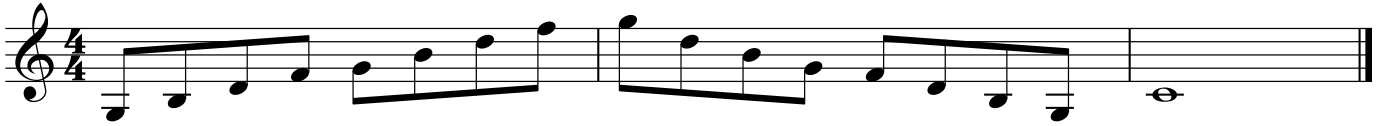
Legato $\text{♩} = 120$



Dominant 7th C

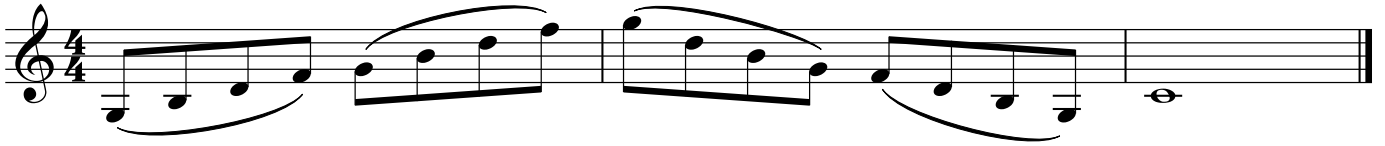
Détaché

♩=120



Slurred

♩=120



Dominant 7th E

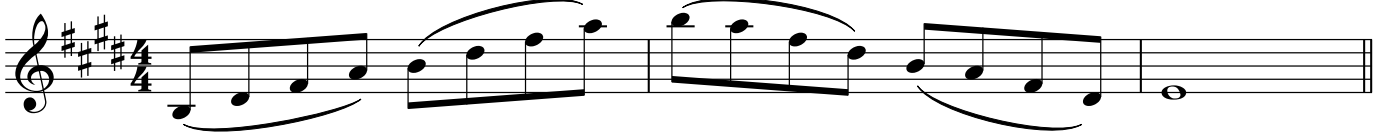
Détaché

♩=120



Slurred

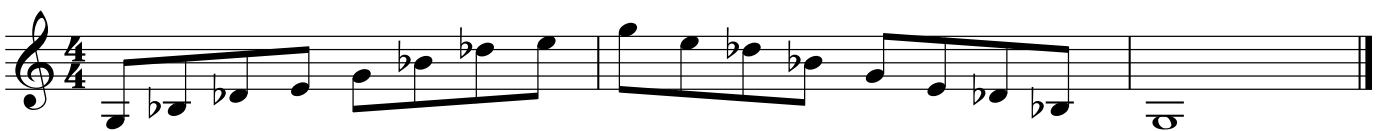
♩=120



Diminished 7th G

Détaché

♩=120



Slurred

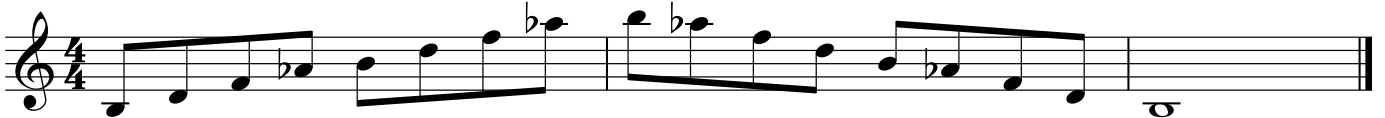
♩=120



Diminished 7th B

Détaché

♩=120



Slurred

♩=120



E Melodic Minor

Détaché (upper half)

♩=120

Spiccato

♩=126

Hook Stroke

♩=110

Seven Note Slur

♩=66

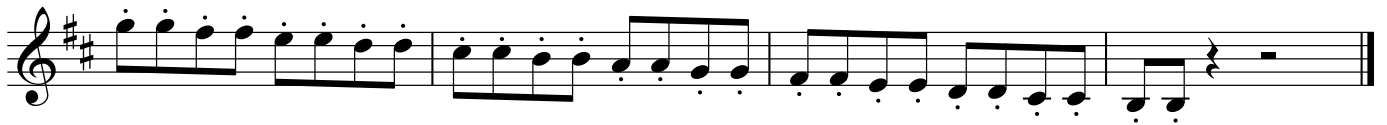
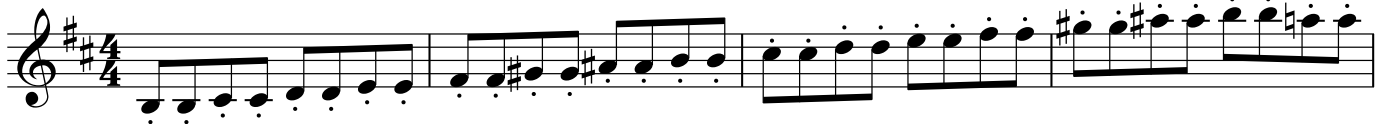
B Melodic Minor

Détaché (upper half)

♩=120

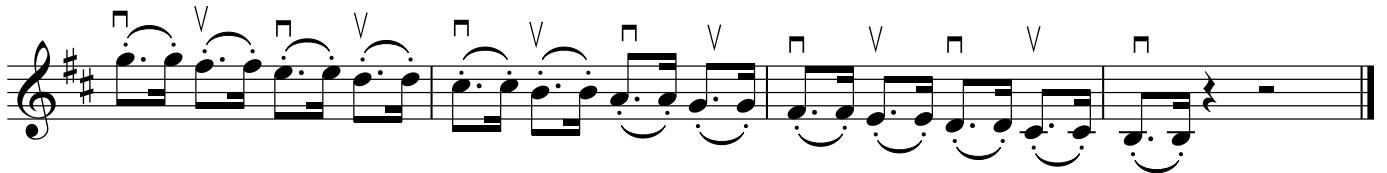


Spiccato ♩=126



Hook Stroke

♩=110



Seven Note Slur

♩=66



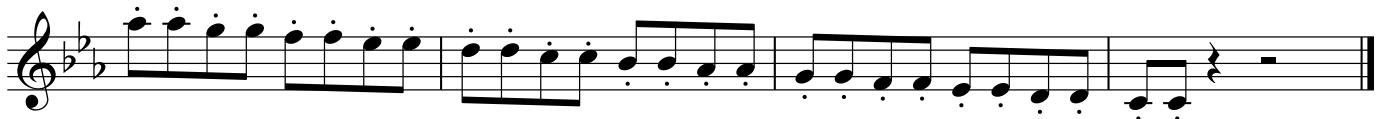
C Melodic Minor

Détaché (upper half)

♩=120

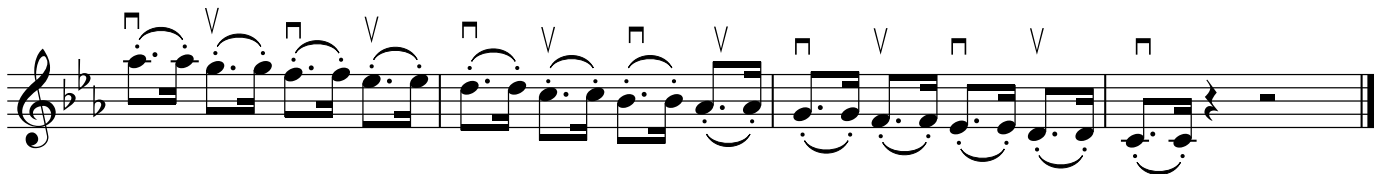
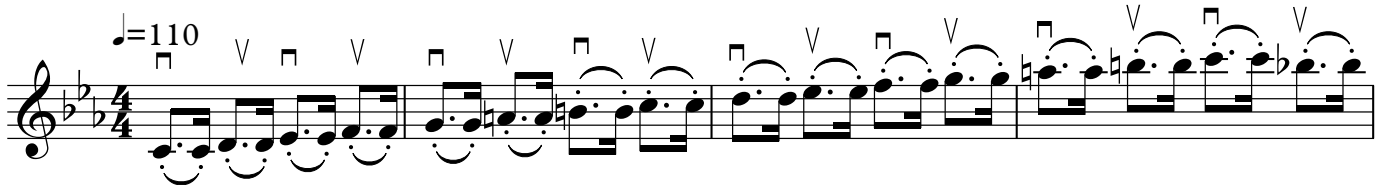


Spiccato ♩=126



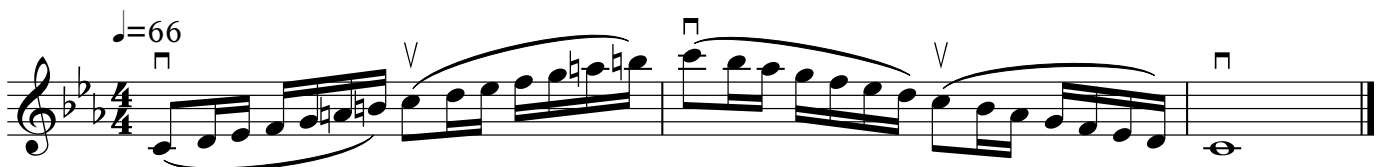
Hook Stroke

♩=110



Seven Note Slur

♩=66



D Melodic Minor

Détaché (upper half)

♩=120



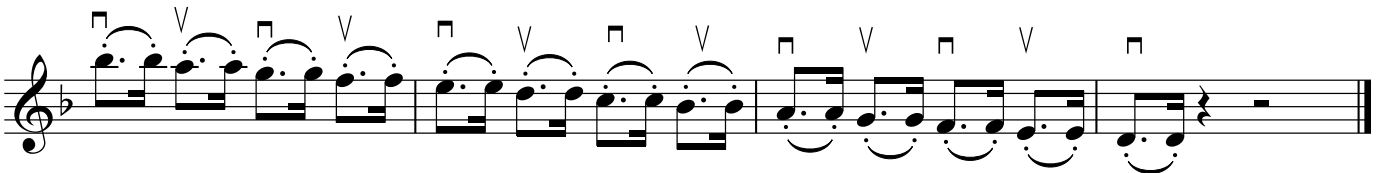
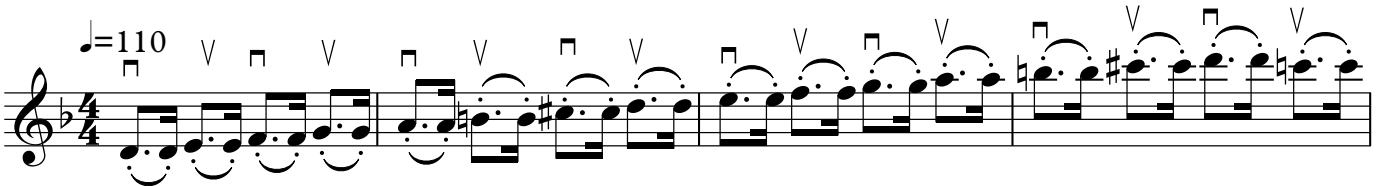
Spiccato

♩=126



Hook Stroke

♩=110



Seven Note Slur

♩=66

